

# 703, U705, U710

## SEMICONDUCTOR FUSE HOLDERS



### 750V SEMICONDUCTOR FUSE HOLDERS

Ferraz Shawmut Semiconductor Fuse Holders feature open face styles. Each version is rated 750 volts and accommodates 14 x 51 mm or 22 x 58 mm fuses. 703, U705 and U710 holders feature Ferraz Shawmut's unique adder-block design which can be snapped onto 1-, 2-, or 3-pole blocks to form multi-pole segmented blocks of as many poles as desired. A choice of box, screw or pressure plate connectors is offered to fit a wide range of standard or solid copper wire. All versions have verified dielectric strengths in excess of 2500V. A patented built-in DIN rail adapter on the U710 blocks adds further design versatility. All fuse clips are made of high conductivity tin-plated copper with spring reinforced clips.

#### HIGHLIGHTS:

- Thermoplastic bases
- DIN Rail (U710) or Screw Mount
- Adder block design

#### APPLICATIONS:

- All circuits up to 750 volts using semiconductor fuses for protection of small inverters, UPS systems, motor drives, etc.

#### Ratings

- 750V AC
- 30A (703)
- 50A (U7050)
- 100A (U7100)
- Short Circuit Current Rating up to 200kA dependent on fuse I.R.

#### Approvals

- UL Recognized Component Guide IZLT2, File E52283
- CSA Certified Class 6225, File 32169

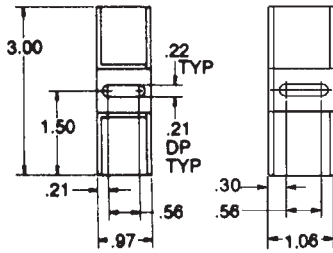


#### RECOMMENDED FUSE USAGE

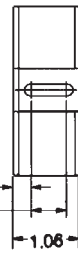
703 . . . . . use with 14x51mm **A70QS, A70P, URD**  
 U705 . . . . . use with 14x51mm **A70QS, A70P, URD**  
 U710 . . . . . use with 22x58mm **A70QS, URD, up to 100A**

# 703, U705, U710

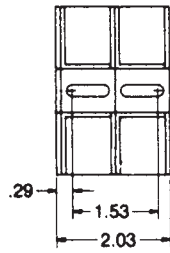
# SEMICONDUCTOR FUSE HOLDERS



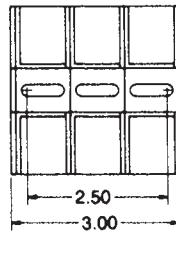
**Fig. 1**



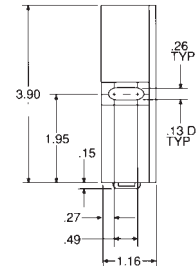
**Fig. 2**



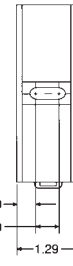
**Fig. 3**



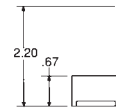
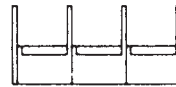
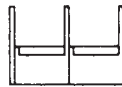
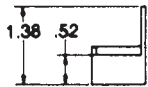
**Fig. 4**



**Figure 5**



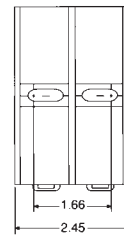
**Figure 6**



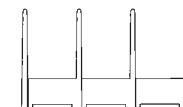
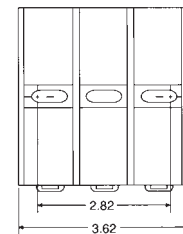
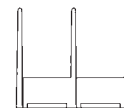
**Recommended mounting  
screws; #10 (.190" dia)**

## 750 Volt Fuse Holders for 14 x 51mm & 22 x 58 mm Fuses

CATALOG NUMBER	FUSE SIZE	Ampacity Rating	POLES	CONNECTOR		FIGURE	CONNECTOR TORQUE (IN-LB)
				TYPE	WIRE RANGE		
U70505	14 x 51	50	Adder	Box	Al/Cu #2-14	1	35
U70506			1				
U70507			2				
U70508			3				
70315	14 x 51	30	Adder	Screw	Cu #10-14	1	20
70316			1				
70317			2				
70318			3				
70325	14 x 51	30	Adder	Pressure Plate	Cu #10-14	1	20
70326			1				
70327			2				
70328			3				
70355	14 x 51	30	Adder	Box	Cu* #4-14	1	35
70356			1				
70357			2				
70358			3				
U71005	22 x 58	100	Adder	Box	Al/Cu #2-14	5	35
U71006			1				
U71007			2				
U71008			3				



**Figure 7**



**Figure 8**

\*Copper box connectors and clips-for copper wires only.

Note: To convert 30A adder pole to single pole, use end barrier #U09322

100A adder pole to single pole, use end barrier #U09372.

