

A4BX

WELDER PROTECTORS/SPECIAL PURPOSE



WELDER PROTECTORS

Ferraz Shawmut Welder Protectors are special purpose limiters used to provide isolation of faulted welding equipment and protection for the cable drop supplying the welder. Welder Protectors have a high thermal capacity and are less affected by high ambient temperatures and extended weld times than similar size Class J, K, or R fuses*. Welder Protectors should only be applied for isolation of short circuited welding circuits. Overload protection must be provided for by other means.

*Contact factory for Class L sizes and ratings.

Ratings

- 600VAC, 200kA I.R.
- 100-600A

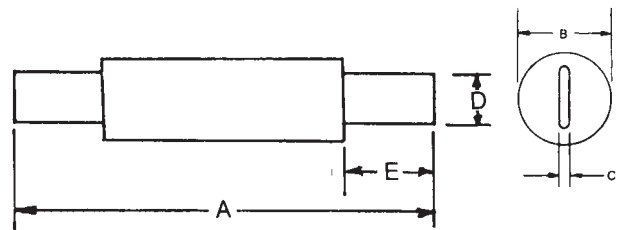
Approvals

- Ferraz Shawmut Certified

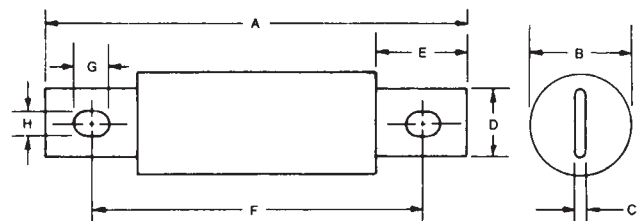
Standard Fuse Ampere Ratings, Catalog Numbers

AMPERE RATING	CATLOG NUMBER	
	CLASS K DIMENSION	CLASS J DIMENSION
100	A4BX100-150	-
125	A4BX125-150	-
150	A4BX150-150	-
200	A4BX200-150	A4BX200-150J
225	A4BX225-150	A4BX225-150J
300	A4BX300-150	A4BX300-150J
400	A4BX400-150	A4BX400-150J
500	A4BX500-150	-
600	A4BX600-150	-

*For larger ratings consult factory.



CLASS K



CLASS J

A4BX () - 150; Class K Dimensions

AMPERE RATING	INCHES							
	A	B	C	D	E	F	G	H
100	7-7/8	1	1/8	23/32	2-5/8	-	-	-
125-200	9-5/8	1-1/2	3/16	1-1/8	3-7/16	-	-	-
225-400	11-5/8	2	1/4	1-5/8	4-7/16	-	-	-
500-600	13-3/8	2-1/2	1/4	2	5-5/16	-	-	-

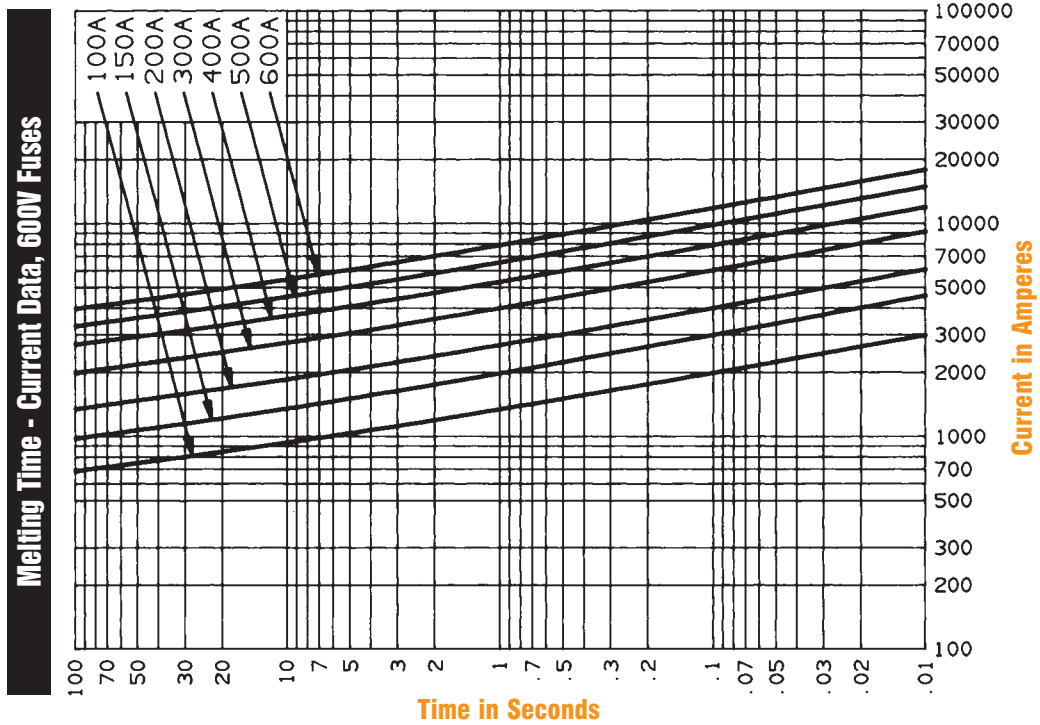
A4BX () - 150J; Class J Dimensions

200	5-3/4	1-1/2	3/16	1-1/8	1-1/2	4-3/8	3/8	9/32
225-400	7-1/8	2	1/4	1-5/8	2-3/16	5-1/4	17/32	13/32

A4BX

WELDER PROTECTORS/SPECIAL PURPOSE

A4BX100 to 600 Types 150, 150J



Peak Let-Thru Current Data – A4BX100 to 600, 600 Volts AC

