

# URGG/URGH

# SEMICONDUCTOR PROTECTION FUSES



## PROTISTOR® FUSES

250V

URGG/URGH from 50 to 1050A

SIZES: 36 X 27 - 2 X 36 X 27

### Features/Benefits

- **Extremely high Interrupting rating Fuses:**  
Protection of power Semiconductors according to IEC 269.1 and 4
- **250V Voltage Rating** according to IEC 33
- **gR Class** (Ratings from 50 to 350A URGG - 300 to 700A URGH) according to VDE 636-23 and IEC 269.4
- **aR Class** (Ratings from 400 to 525A URGG - 800 to 1050A URGH) according to VDE 636-23 and IEC 269.4
- Two models complying with BS 88-4
  - without indicator
  - with external trip-indicator

## APPLICATIONS DATA

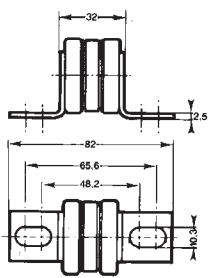
Voltage rating $U_N$ (V)	Sizes	Class	Current rating $I_N$ (A)	Melting $I_2^t$ @ 1 ms $I_2^t_p$ (A <sup>2</sup> s)	Total clearing $I_2^t$ @ $U_N$ A <sup>2</sup> s	Watt losses		Tested interrupting rating
						0.8 $I_N$	$I_N$	
250 V	36x27	URGG	50	120	500	4.75	9.5	100 kA @ 250 V
			75	330	1380	6.3	12.6	
			100	745	3060	7.8	15.7	
			125	1340	5500	9.1	18.2	
			150	1930	7950	10.8	21.6	
			200	4020	16400	13.5	27.0	
			250	5350	30000	16.3	32.6	
			300	7290	49600	18.6	37.2	
			350	18000	74000	21	42.0	
			400	25100	128000	23.4	46.7	
			450	33500	170000	27.1	54.1	
			500	43000	219000	30.4	60.8	
	525	48200	245000	33.2	66.4			
	2x36x27	URGH	300	7700	31800	21.6	43.2	100 kA @ 250 V
			350	11500	48700	24.3	48.6	
			400	16000	65600	27	54.0	
			500	29100	120000	32.6	65.2	
			600	48200	198500	37.2	74.4	
			700	72000	276000	42.0	84.0	
800			100000	512000	46.7	93.4		
900			134000	680000	54.1	108.2		
1000	172000	876000	60.8	121.6				
	1050	193000	980000	66.4	132.8			

Minimum operating voltage for all trip indicators = 20V

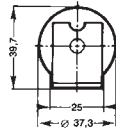
# URGG/URGH

# SEMICONDUCTOR PROTECTION FUSES

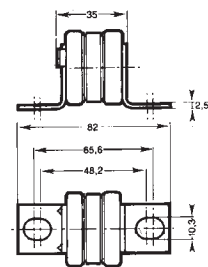
## PART NUMBERS



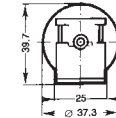
**CP 36x27 - Without trip-indicator**



SIZE	CATALOG NO.	REF #
36x27	2.5 URGG 36/50	J 080945
	2.5 URGG 36/75	K 080946
	2.5 URGG 36/100	L 080947
	2.5 URGG 36/125	R 082470
	2.5 URGG 36/150	Q 082469
	2.5 URGG 36/200	P 082468
	2.5 URGG 36/250	N 082467
	2.5 URGG 36/300	M 082466
	2.5 URGG 36/350	L 082465
	2.5 URGG 36/400	G 075538
	2.5 URGG 36/450	H 075539
	2.5 URGG 36/500	J 075540
2.5 URGG 36/525	K 075541	

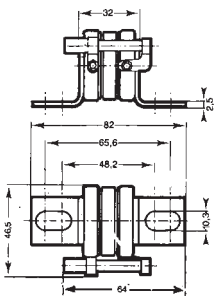


**CP 36x27 - With built-in trip-indicator**

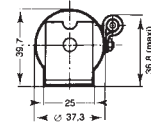


Microswitch MC 36 GR 2.5 N - Ref. P 092496

SIZE	CATALOG NO.	REF #
36x27	2.5 URGG 36 T 50	F 080942
	2.5 URGG 36 T 75	G 080943
	2.5 URGG 36 T 100	H 080944
	2.5 URGG 36 T 125	W 082382
	2.5 URGG 36 T 150	V 082381
	2.5 URGG 36 T 200	T 082380
	2.5 URGG 36 T 250	S 082379
	2.5 URGG 36 T 300	R 082378
	2.5 URGG 36 T 350	Q 082377
	2.5 URGG 36 T 400	L 075542
	2.5 URGG 36 T 450	M 075543
	2.5 URGG 36 T 500	N 075544
	2.5 URGG 36 T 525	P 075545

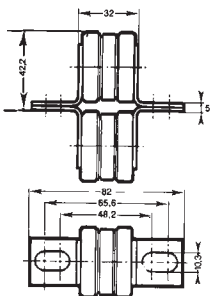


**CP 36x27 - With separated trip-indicator**

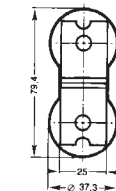


Microswitch MC 6.3 GR 2.5 N - Ref. Y 310005

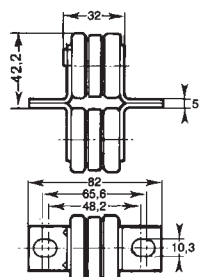
SIZE	CATALOG NO.	REF #
36x27	2.5 URGG 36 P 50	C 080939
	2.5 URGG 36 P 75	D 080940
	2.5 URGG 36 P 100	E 080941
	2.5 URGG 36 P 125	Y 081004
	2.5 URGG 36 P 150	X 081003
	2.5 URGG 36 P 200	W 081002
	2.5 URGG 36 P 250	V 081001
	2.5 URGG 36 P 300	T 081000
	2.5 URGG 36 P 350	S 080999
	2.5 URGG 36 P 400	V 075504
	2.5 URGG 36 P 450	W 075505
	2.5 URGG 36 P 500	X 075506
	2.5 URGG 36 P 525	Y 075507



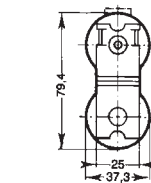
**CP 2x36x27 - Without trip-indicator**



SIZE	CATALOG NO.	REF #
2x36x27	2.5 URGH 236/300	K 082464
	2.5 URGH 236/350	J 082463
	2.5 URGH 236/400	H 082462
	2.5 URGH 236/500	G 082461
	2.5 URGH 236/600	F 082460
	2.5 URGH 236/700	E 082459
	2.5 URGH 236/800	Q 075546
	2.5 URGH 236/900	R 075547
	2.5 URGH 236/1000	S 075548
	2.5 URGH 236/1050	T 075549



**CP 2x36x27 - With built-in trip-indicator**



Microswitch MC 36 GR 2.5 N - Ref. P 092496

SIZE	CATALOG NO.	REF #
2x36x27	2.5 URGH 236 T 300	P 082376
	2.5 URGH 236 T 350	N 082375
	2.5 URGH 236 T 400	M 082374
	2.5 URGH 236 T 500	L 082373
	2.5 URGH 236 T 600	K 082372
	2.5 URGH 236 T 700	J 082371
	2.5 URGH 236 T 800	V 075550
	2.5 URGH 236 T 900	R 075501
	2.5 URGH 236 T 1000	S 075502
	2.5 URGH 236 T 1050	T 075503