

Mersen MPDB Series

Next Generation Open-Style Power Distribution Blocks



Proud distributor of Mersen products | Brookfield, WI | Phone:
(262) 252-1600 Fax: (262) 252-1616

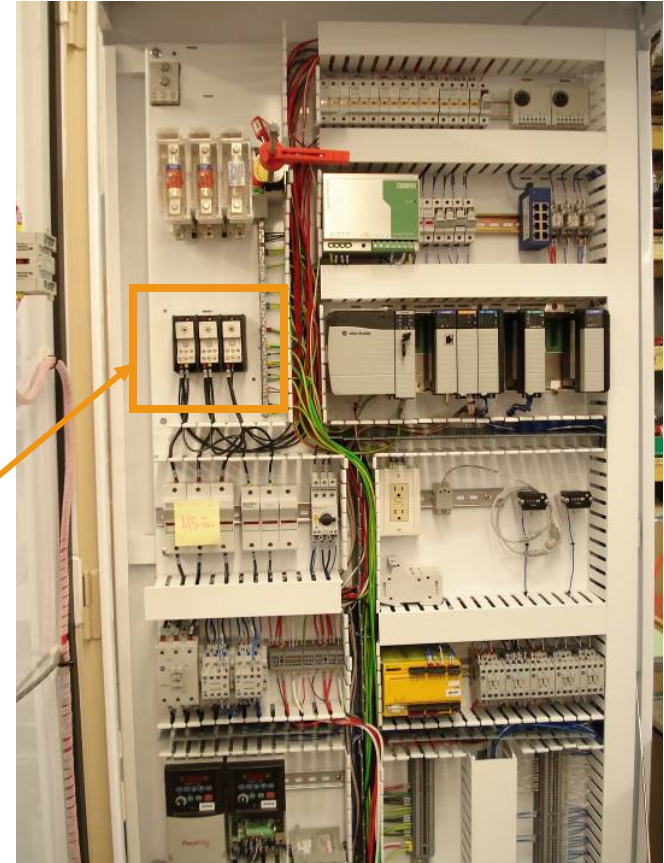
MPDB Series

- Power Distribution Block – Definition
 - Splits primary power cable into a number of secondary circuits and provides a fixed tap-off point
- Primary Applications
 - Power Distribution and Control

MPDB Series – Applications

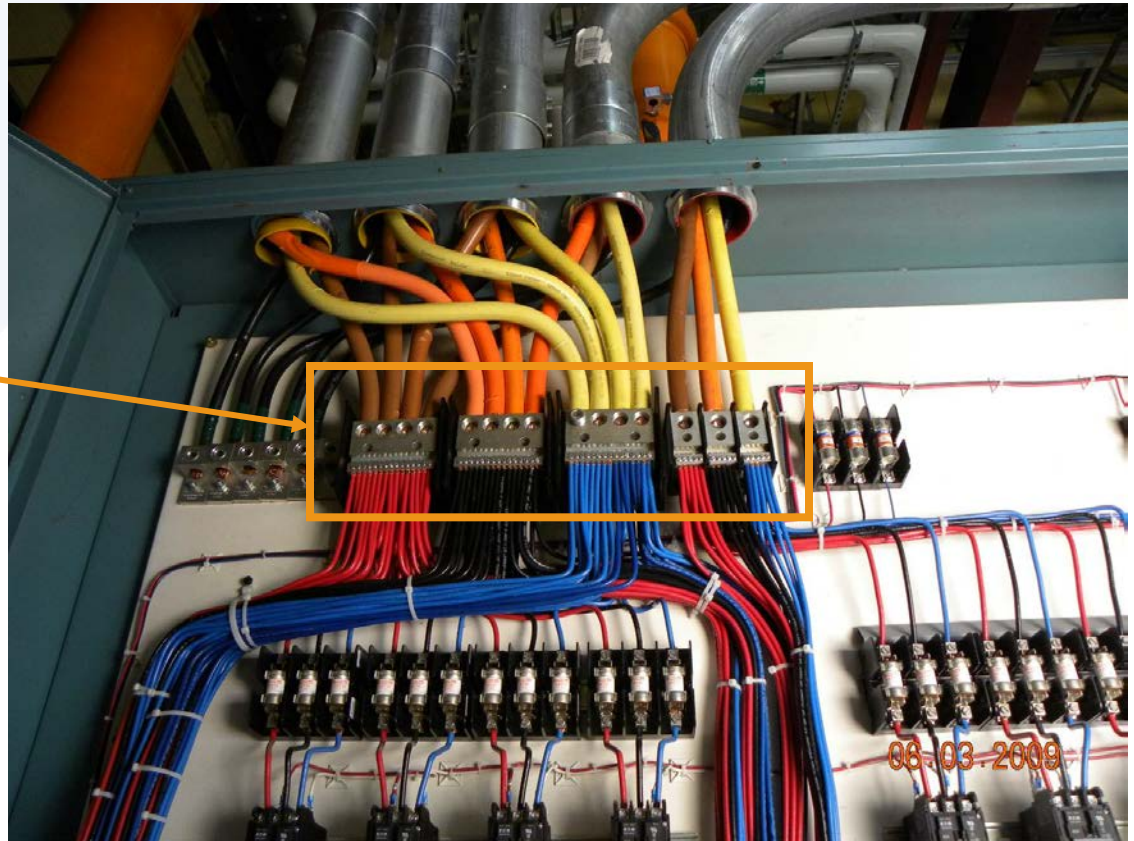


**Power
Distribution
Block used in
Feeder Circuit**



MPDB Series – Applications

**Power
Distribution
Blocks used in
Feeder Circuit**



MPDB Series – Overview

- May 2013 – Mersen launches their next generation of PDB's, the new MPDB series
- Two Significant Upgrades
 - UL Listed (UL 1953) versus UL Recognized (UL 1059)
 - Snap-on Hinged Safety Cover



MPDB Series – Overview

- UL 1953 Listed versus UL 1059 Recognized





VS



- UL Listing means the product is suitable for all applications without question (there are no conditions of acceptability)
- UL Recognized components must be evaluated and approved by UL authority in the end use application
- The MPDB UL Listing approval saves you and your customers time and money when selecting and installing PDB's

MPDB Series – Overview

- UL 1953 Listed versus UL 1059 Recognized

	UL Marking	Spacing 1" air 2" surface	Approved for UL508A Branch	Approved for UL508A Feeder	Conditions of Acceptability
UL 1953 PDBs		Yes	Yes	Yes	No
UL 1059 PDBs		No	Yes	No	Yes

MPDB Series – Product Offering

■ MPDB Series – Power Distribution Blocks

- Open-style blocks are the most common in industry
 - See Mersen's line of Finger-safe blocks for enhanced safety
- Extensive variety of sizes, ampere ratings, configurations
 - Mersen offers the largest selection in the industry
- Adder pole configuration
 - Adds user flexibility – Assemble multiple poles in the field, tool-free
- Optional, snap-in hinged safety cover
 - Adds a higher degree of safety and prevention against shock hazards

MPDB Series – Product Offering

■ Part Selection Criteria

- Use conductor material type to select PDB material
- Determine # of inputs and input conductor size
- Determine # of outputs and output conductor size
- Determine number of phases (poles)
- Check to make sure ampere rating is acceptable

Line		Load		Catalog Numbers - Aluminum				Catalog Numbers - Copper				Amp Rating per Pole	
Wire Range	Open-ings per Pole	Wire Range	Open-ings per Pole	Number of Poles				Number of Poles				Al	Cu
				ADDER	1-P	2-P	3-P	ADDER	1-P	2-P	3-P		
Box-Box Configuration													
2/0 - 14	1	2/0 - 14	1	MPDB67050	MPDB67051	MPDB67052	MPDB67053	MPDB66050	MPDB66051	MPDB66052	MPDB66053	135	175
		2 - 14	4	MPDB67570	MPDB67571	MPDB67572	MPDB67573	MPDB66570	MPDB66571	MPDB66572	MPDB66573		
		2 - 14	6	MPDB67560	MPDB67561	MPDB67562	MPDB67563	MPDB66560	MPDB66561	MPDB66562	MPDB66563		
		2 - 14	8	MPDB67580	MPDB67581	MPDB67582	MPDB67583	MPDB66580	MPDB66581	MPDB66582	MPDB66583		
		6 - 14	10	MPDB67590	MPDB67591	MPDB67592	MPDB67593	MPDB66590	MPDB66591	MPDB66592	MPDB66593		
		10 - 14	12	MPDB67110	MPDB67111	MPDB67112	MPDB67113	MPDB66110	MPDB66111	MPDB66112	MPDB66113		

MPDB Series – Product Offering

■ Additional Features

– Safety Cover

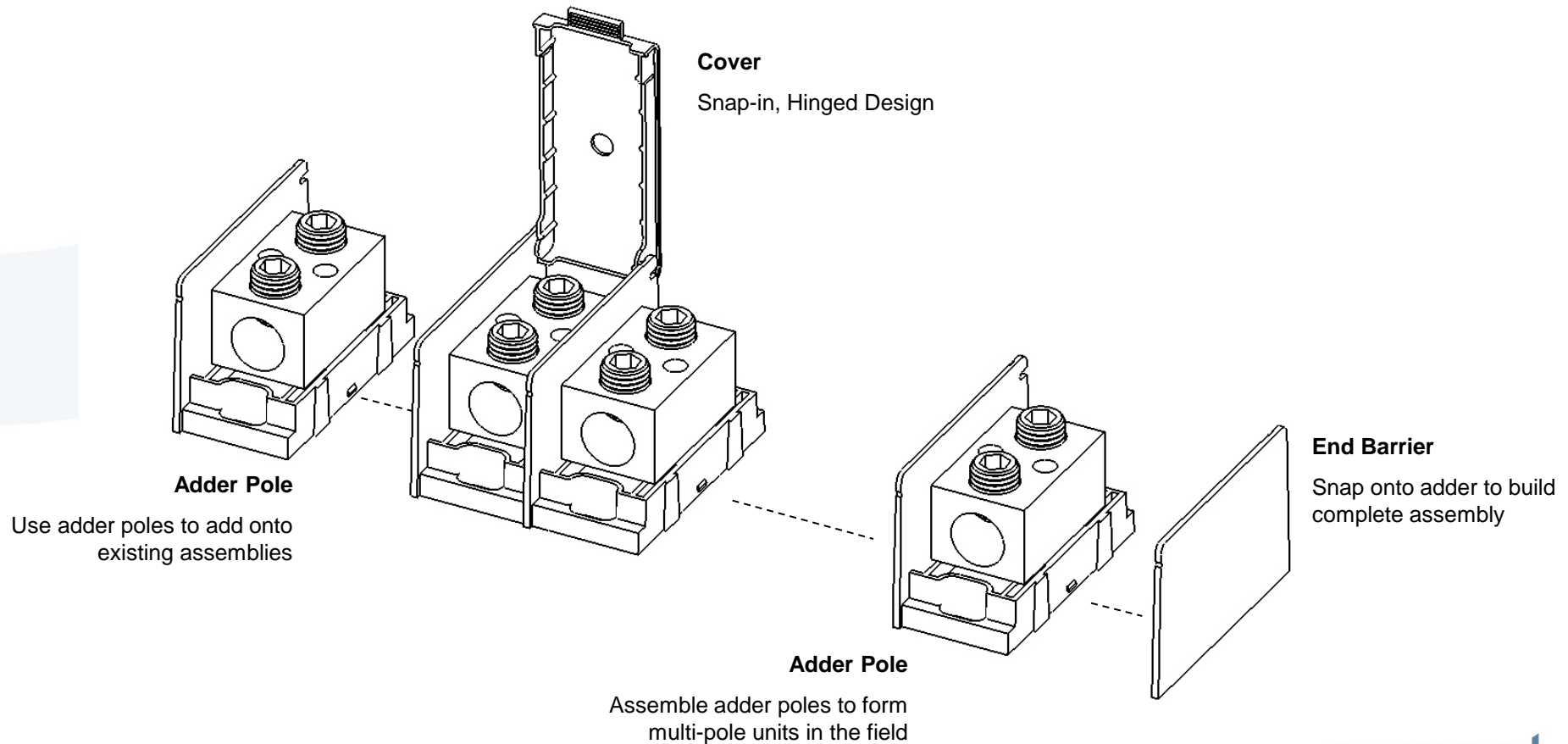
- Offer higher degree of safety and reduce electrical shock hazards by covering exposed live parts
- Covers can be purchased separately, one per pole, and can be installed in the field

– Adder Pole Design

- Adder poles offer a greater degree of flexibility. Multiple pole units can be assembled in the field, tool free. Ideal for job changes or minimizing amount of SKUs

MPDB Series – Product Offering

■ Additional Features



MPDB Series – Product Offering

■ Additional Information

– Short-Circuit Current Rating

- Standalone rating of 10kA due to pullout force of conductors under short-circuits
- Series rating of 100kA when used with UL Listed fuses. Fuses limit the amount of energy created by fault conditions therefore reducing the amount of force applied to conductors

– Wire Type

- Copper blocks for CU wire only
 - Related to coefficient of expansion of CU for improved heat cycling
- Aluminum blocks for CU or AL wire, 90°C certified

MPDB Series

- To find more information regarding Mersen's new line of Power Distribution Blocks, MPDB series, & products distributed by **Gross Automation contact us:**
- **Phone: (262) 252-1600 Fax: (262) 252-1616**
- Catalog search:
ep-us.mersen.com
- Enter "MPDB" in the catalog search feature



**Proud distributor of Mersen products | Brookfield, WI |
Phone: (262) 252-1600 Fax: (262) 252-1616**

