

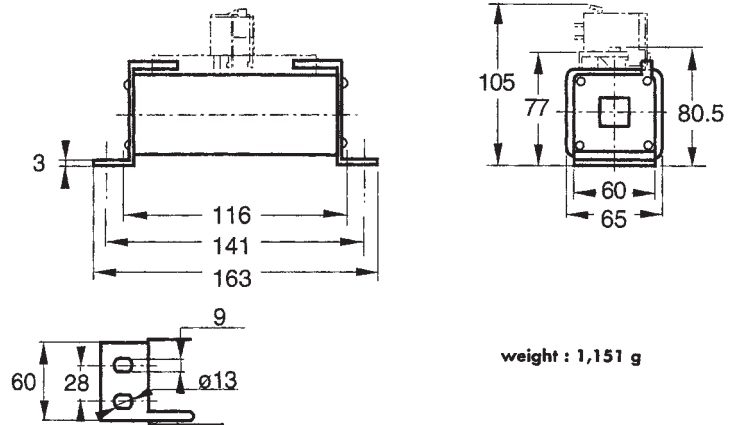
1200V DC

SQUARE-BODY/SPECIAL PURPOSE



1200 V DC SRG from 160 to 420 A Size 72

➤ **Dimensions**



weight : 1,151 g

MAIN CHARACTERISTICS

SIZE	CURRENT RATING I_n (A)	INTERRUPTING RATING	MAXIMUM I^2t @1000V=		WATTS LOSS		CATALOG NUMBER (1)	REF. NUMBER
			L/R=15ms	L/R=45ms	0.8 I_n	I_n		
72	160	@ 1200VDC = 100kA L/R = 15ms	12000	20000	41	77.5	CC 12 SRG 72 QF 0160	K 079428
	200		21000	36000	48	88	CC 12 SRG 72 QF 0200	L 079429
	250		45500	78500	57	96	CC 12 SRG 72 QF 0250	M079430
	315		90000	154000	60	110	CC 12 SRG 72 QF 0315	N 079431
	400		182000	314000	66	129	CC 12 SRG 72 QF 0400	P 079432
	420		220000	380000	67	131	CC 12 SRG 72 QF 0420	Q 079433

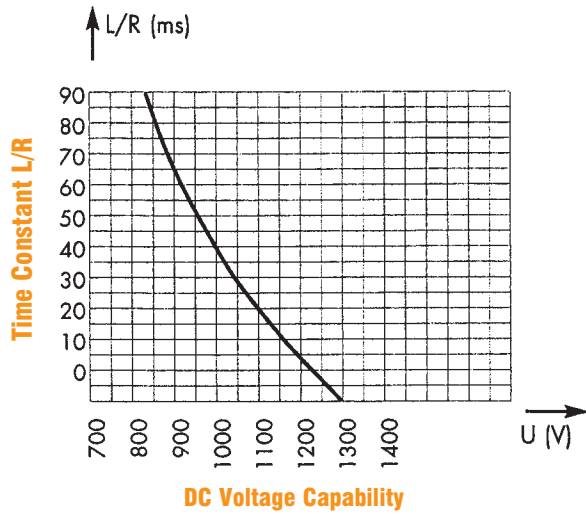
Microswitch: MC 3E 1-5N Ref. Number: D310020

1200V DC

SQUARE-BODY/SPECIAL PURPOSE

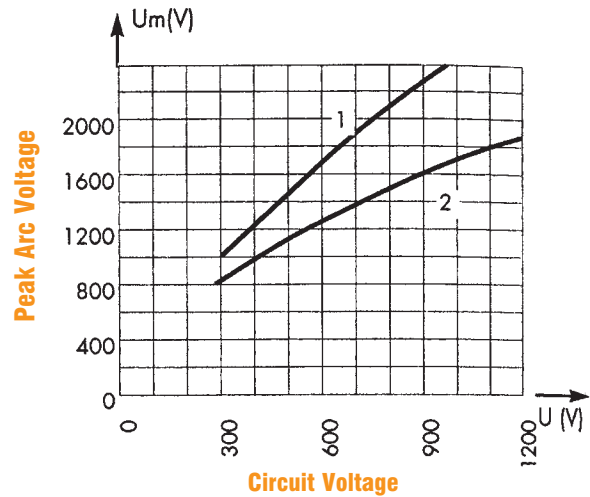
ELECTRICAL CHARACTERISTICS

DC Voltage Capabilities vs. Time Constant

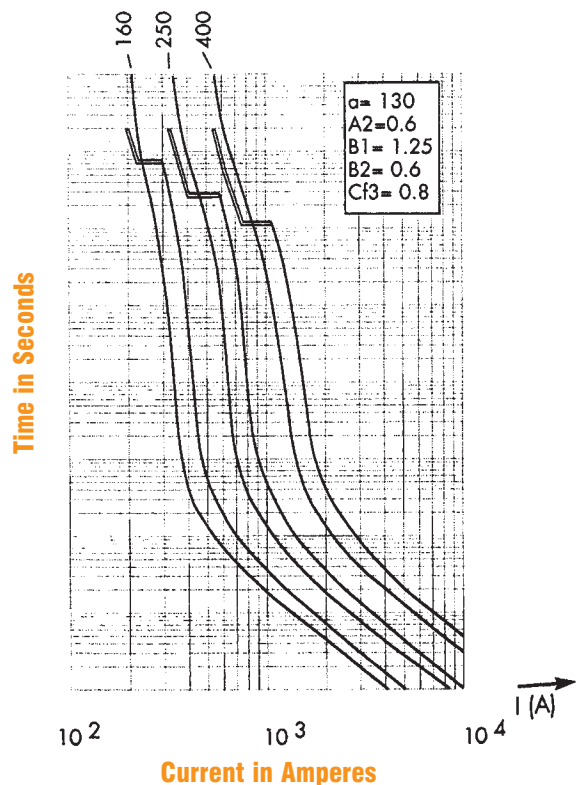
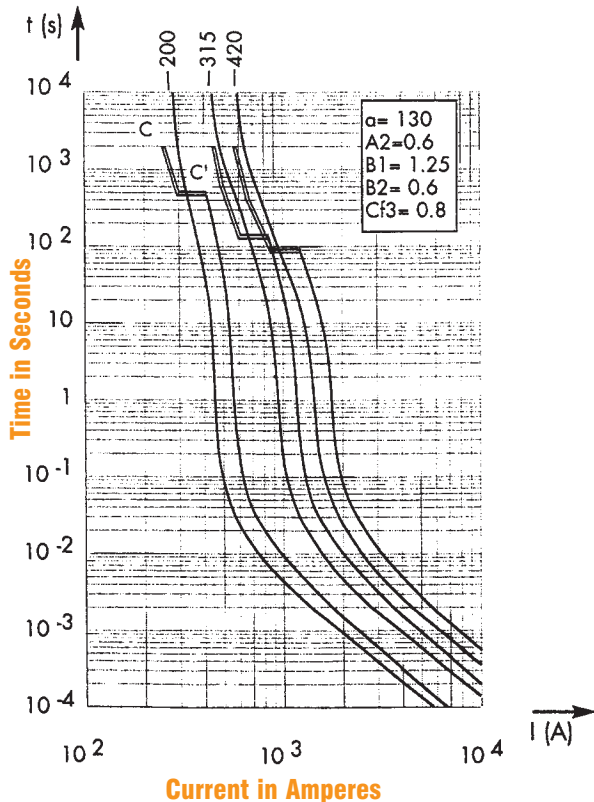


Above: Curve indicates maximum permissible value of time constant L/R as a function of DC working voltage

Peak Arc Voltage vs. Working Voltage



Melting Time vs. Current Data



Above: Curves indicate, for each rated current, pre-arcing (melting) time vs. R.M.S. pre-arcing (melting) current.

G