

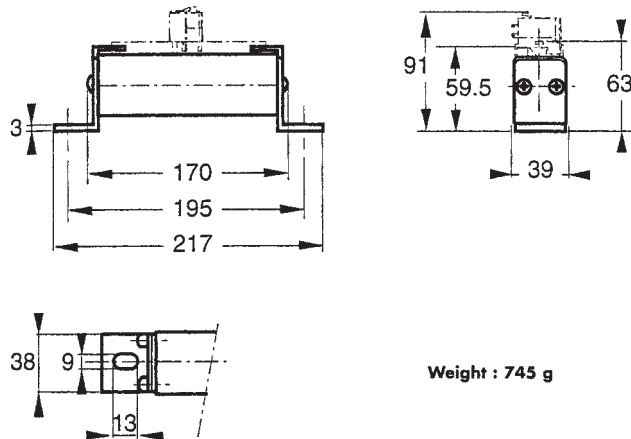
2000V DC

SQUARE-BODY/SPECIAL PURPOSE

2000 V DC SRC from 20 to 215 A Size 120



► Dimensions



Weight : 745 g

MAIN CHARACTERISTICS

| SIZE | CURRENT RATING I_N (A) | INTERRUPTING RATING | MAXIMUM I^2t @1600V= | | WATTS LOSS | | CATALOG NUMBER (1) | REF. NUMBER |
|------|-----------------------------|------------------------------------|---------------------------|----------|------------|-------|-----------------------|-------------|
| | | | L/R=15ms | L/R=45ms | 0.8 I_N | I_N | | |
| 120 | 20 | @ 2000VDC = 100kA L/R = 15ms | 180 | 310 | 8 | 16 | CC 20 SRC 120 QF 0020 | J 079450 |
| | 25 | | 180 | 310 | 12.5 | 25 | CC 20 SRC 120 QF 0025 | K 079451 |
| | 32 | | 350 | 610 | 14.5 | 29.5 | CC 20 SRC 120 QF 0032 | L 079452 |
| | 40 | | 580 | 1000 | 17.5 | 36 | CC 20 SRC 120 QF 0040 | M 079453 |
| | 50 | | 1030 | 1800 | 20.5 | 42 | CC 20 SRC 120 QF 0050 | N 079454 |
| | 63 | | 1600 | 2800 | 26 | 53.5 | CC 20 SRC 120 QF 0063 | P 079455 |
| | 80 | | 3100 | 5400 | 30 | 61.5 | CC 20 SRC 120 QF 0080 | Q 079456 |
| | 100 | | 5800 | 10000 | 35 | 70.5 | CC 20 SRC 120 QF 0100 | R 079457 |
| | 125 | | 9200 | 16000 | 43 | 87.5 | CC 20 SRC 120 QF 0125 | S 079458 |
| | 160 | | 19200 | 33200 | 49 | 99 | CC 20 SRC 120 QF 0160 | T 079459 |
| | 200 | | 45000 | 78500 | 49.5 | 101 | CC 20 SRC 120 QF 0200 | U 079460 |
| | 215 | | 55000 | 95000 | 52 | 106 | CC 20 SRC 120 QF 0215 | W 079461 |

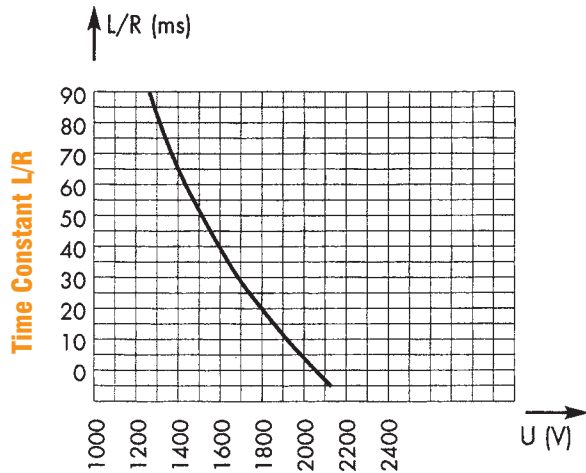
Microswitch: MCR 3E 1-5N BS Ref. Number: D310023

2000V DC

SQUARE-BODY/SPECIAL PURPOSE

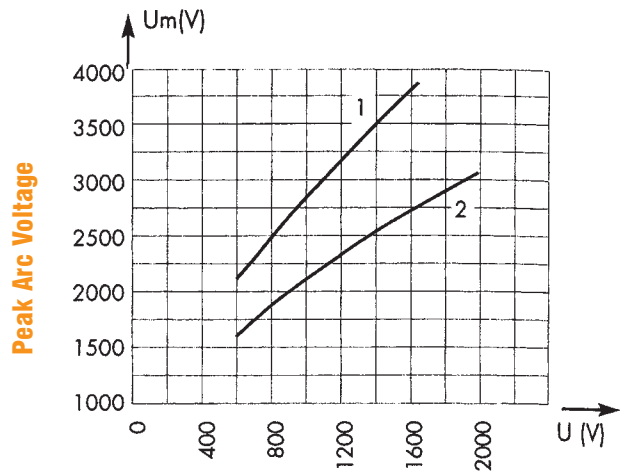
ELECTRICAL CHARACTERISTICS

DC Voltage Capabilities vs. Time Constant



DC Voltage Capability

Peak Arc Voltage vs. Working Voltage



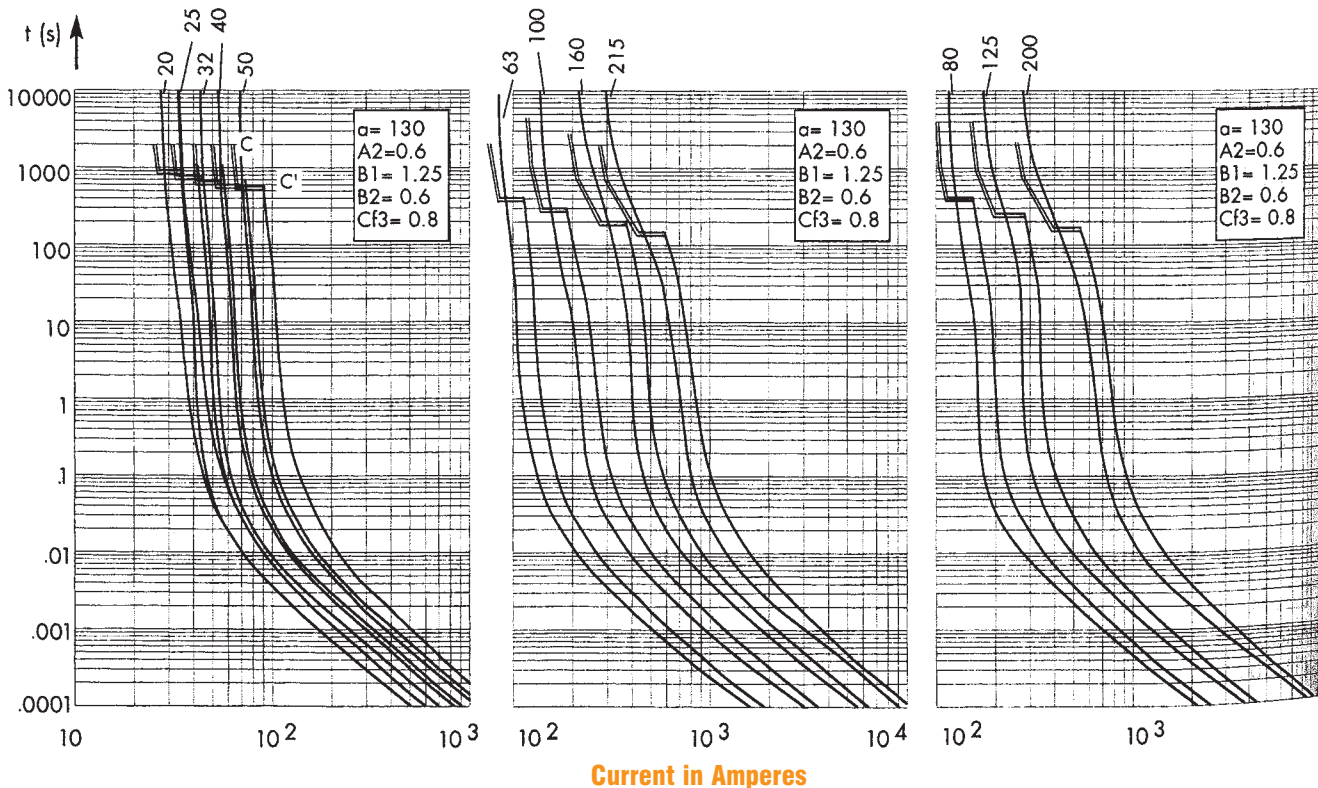
Circuit Voltage

Above: Curve indicates the maximum permissible value of time constant L/R as a function of the DC working voltage

1 : $L/R = 45$ ms

2 : $L/R = 15$ ms

Melting Time vs. Current Data



Current in Amperes

Above: Curves indicate, for each rated current, pre-arcing (melting) time vs. R.M.S. pre-arcing (melting) current.