

750V DC

SQUARE-BODY FUSES/SPECIAL PURPOSE

SIZE: 120



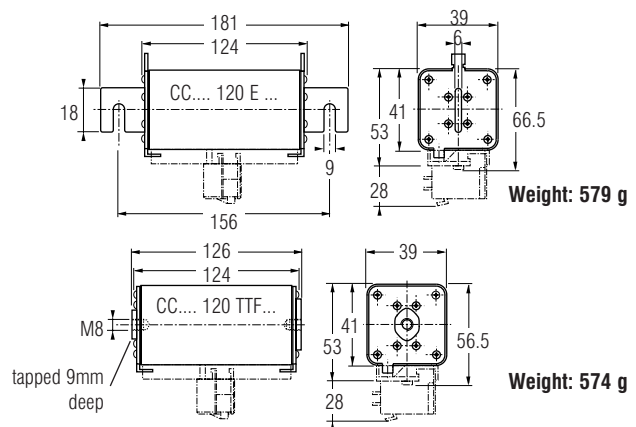
Ratings

- 50 to 160 Amps
- 750vdc at 100kA
L/R=100mSec
- 900vdc at 100kA
L/R=40mSec

Features/Benefits

- **Blown Fuse** indicator
- **Square** ceramic body
- **Full range** D.C. operation
- Bladed and tapped versions standard

➤ Dimensions



APPLICATIONS DATA

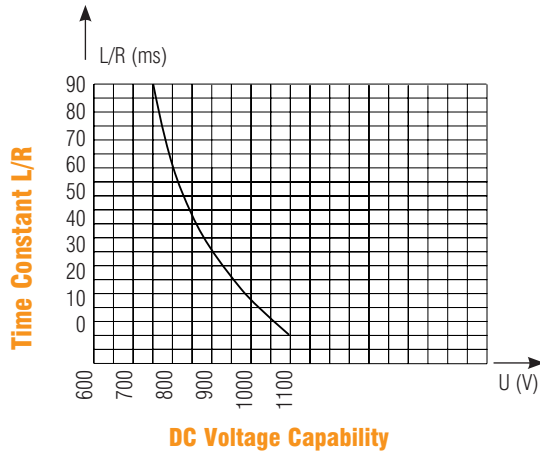
SIZE	CURRENT RATING I_N (A)	INTERRUPTING RATING	MAXIMUM I^2t @900V=L/R 40ms		WATTS LOSS		CATALOG NUMBER (1)	REF. NUMBER
			$I_p=10I_N$	$I_p=50I_N$	$0.8 I_N$	I_N		
120	50	@ 750V= 100kA L/R = 100ms	42500	8500	4.4	8.1	CC 7,5 gRC 120 EF 0050	Y084776
	63		75500	15000	5.7	10.4	CC 7,5 gRC 120 EF 0063	R085207
	80		125000	24500	7.3	13.4	CC 7,5 gRC 120 EF 0080	Q085206
	100		200000	40000	9.1	16.7	CC 7,5 gRC 120 EF 0100	P085205
	125		315000	62500	11.5	21	CC 7,5 gRC 120 EF 0125	R086242
	160		485000	100000	15	27	CC 7,5 gRC 120 EF 0160	N085204
	50	@ 900 V= 100kA L/R = 40ms	42500	8500	4.4	8.1	CC 7,5 gRC 120 TTF 0050	B220824
	63		75500	15000	5.7	10.4	CC 7,5 gRC 120 TTF 0063	Q082400
	80		125000	24500	7.3	13.4	CC 7,5 gRC 120 TTF 0080	Z090435
	100		200000	40000	9.1	16.7	CC 7,5 gRC 120 TTF 0100	R082401
	125		315000	62500	11.5	21	CC 7,5 gRC 120 TTF 0125	P085251
	160		485000	100000	15	27	CC 7,5 gRC 120 TTF 0160	R085253

Microswitch: MC 3E 1-5N Ref. Number: D310020
Contact factory for holder

750V DC

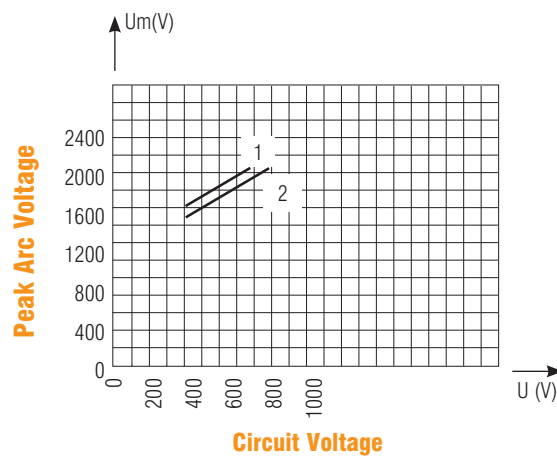
SQUARE-BODY FUSES/SPECIAL PURPOSE

DC Voltage Capabilities vs. Time Constant



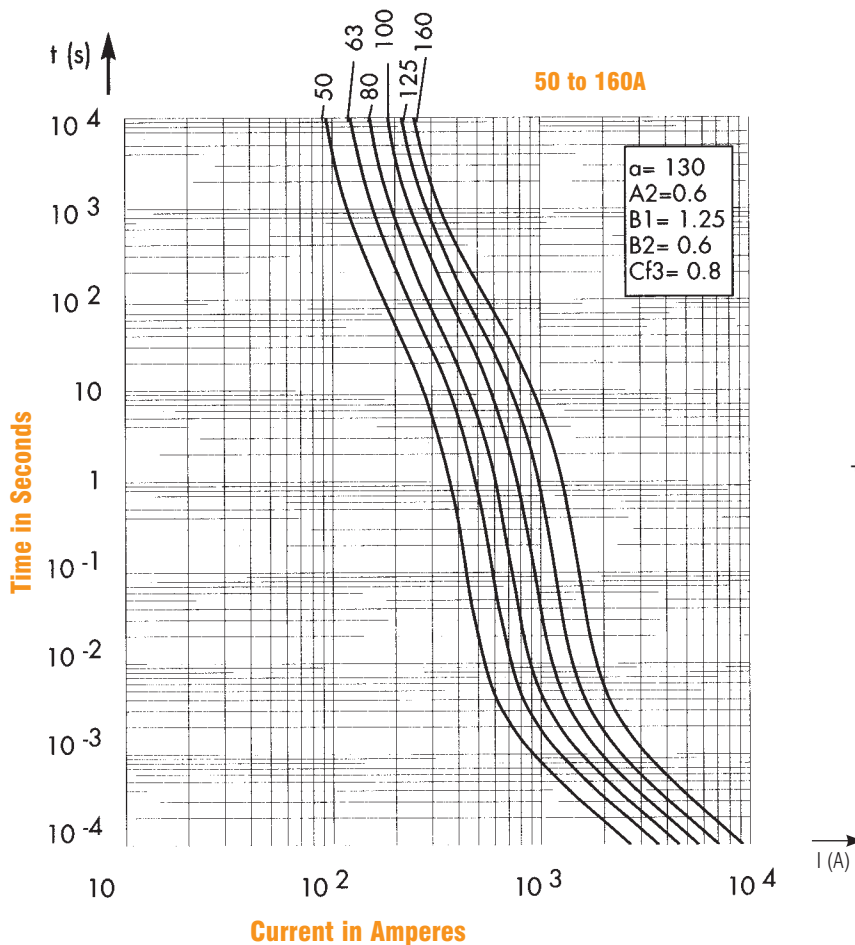
Above: Curve indicates maximum permissible value of time constant L/R as a function of DC working voltage.

Peak Arc Voltage vs. Working Voltage

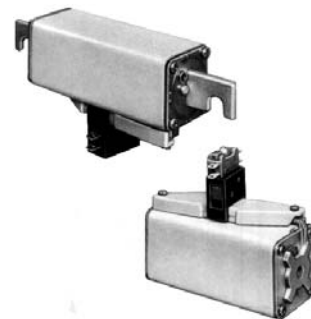


1-L/R = 45ms
2-L/R = 15ms

Melting Time-Current Data



Above: Curves indicate, for each rated current, pre-arcing (melting) time vs. R.M.S. pre-arcing (melting) current.



± 7% tolerance for mean pre-arcing (melting) current

G