

660-750V DC

SQUARE-BODY/SPECIAL PURPOSE

SIZE: 123



Ratings

CC 7.5gRC 500 Amp

- 750vdc@100kA
L/R=100mSec
- 900vdc at 100kA
L/R=40mSec

CC 7.5gRB, gRD

- 630 to 750 Amp
- 750vdc@100kA/
R=50mSec

CC 6.6gRB 800 Amp

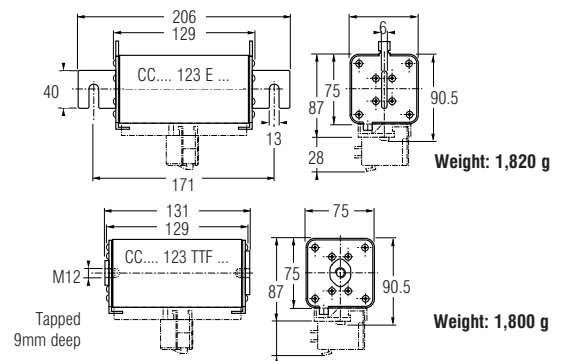
- 660vdc@100kA
L/R=50mSec

Features/Benefits

- **Blown Fuse** indicator
- **Square** ceramic body
- **Full range** D.C. operation
- Bladed and tapped versions standard

➤ Dimensions

75



APPLICATIONS DATA

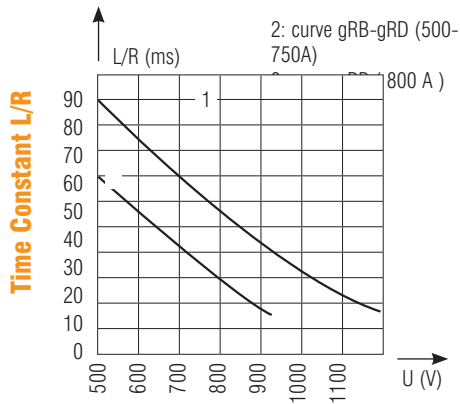
SIZE	CURRENT RATING I _N (A)	INTERRUPTING RATING	MAXIMUM I ² t @900V=L/R 40ms		WATTS LOSS		CATALOG NUMBER (1)	REF. NUMBER	
			I _p =10I _N	I _p =50I _N	0.8 I _N	I _N			
123	500 500	@ 750V DC 100kA L/R = 100ms	5x10 ⁶	1x10 ⁶	51	93.5	CC 7.5 gRC 123 EF 0500 CC 7.5 gRC 123 TTF 0500	M089389 D090439	
		@ 900V DC 100kA L/R = 40ms	5x10 ⁶	1x10 ⁶	51	93.5			
				maximum I ² t (A ² s) @800V = L/R 40ms					
				I _p =10 I _N	I _p =50 I _N				
	630 700 750	@ 750V DC 100kA L/R = 50ms	7.5x10 ⁶	1.5x10 ⁶	74	See page 657	CC 7.5 gRB 123 EF 0630 CC 7.5 gRB 123 EF 0700 CC 7.5 gRD 123 EF 0750	B098556 Q078191 F220943	
			10x10 ⁶	2x10 ⁶	82				
			10x10 ⁶	2x10 ⁶	82				
	630 700 750	L/R = 50ms	7.5x10 ⁶	1.5x10 ⁶	74	See page 657	CC 7.5 gRB 123 TTF 0630 CC 7.5 gRB 123 TTF 0700 CC 7.5 gRD 123 TTF 0750	C098557 F090441 H220945	
			10x10 ⁶	2x10 ⁶	82				
			10x10 ⁶	2x10 ⁶	82				
			maximum I ² t (A ² s) @660V = L/R 30ms						
			I _p =10 I _N	I _p =50 I _N					
800 800	@ 660V DC 100kA L/R = 50ms	12.15x10 ⁶	2.6x10 ⁶	90	See page 657	CC 6.6 gRB 123 EF 0800 CC 6.6 gRB 123 TTF 0800	G220944 J220946		
		12.15x10 ⁶	2.6x10 ⁶	90					

Contact factory for holder

660-750V DC

SQUARE-BODY/SPECIAL PURPOSE

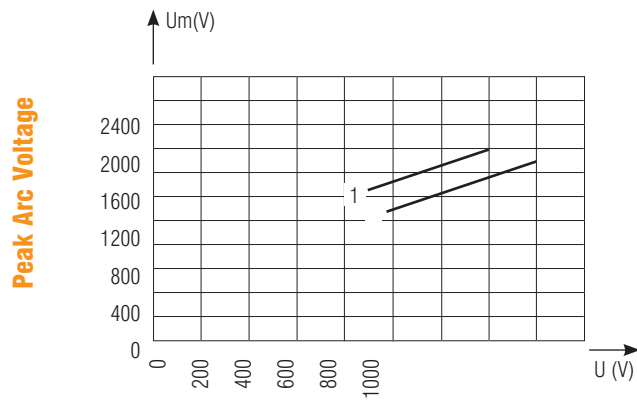
DC Voltage Capabilities vs. Time Constant



DC Voltage Capability

Above: Curves indicate maximum permissible value of time constant L/R as a function of DC working voltage.

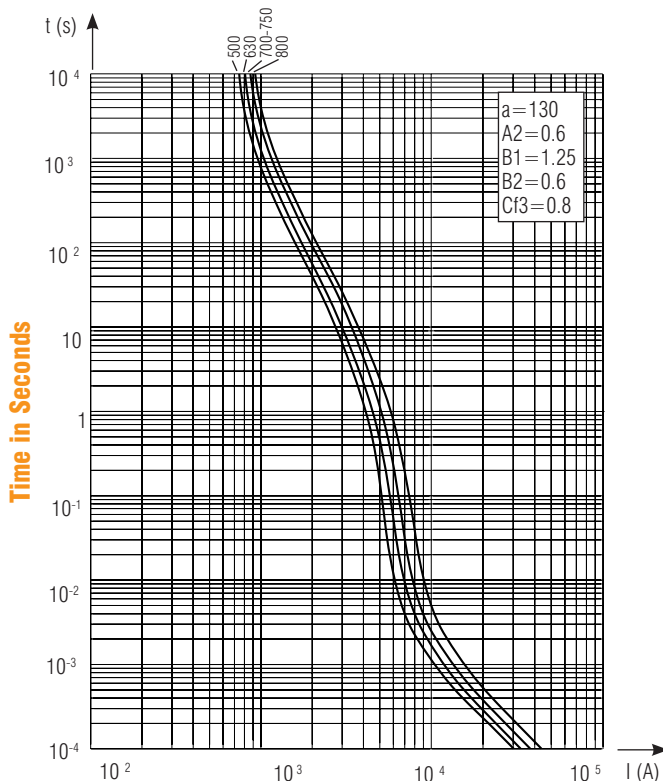
Peak Arc Voltage vs. Working Voltage



Circuit Voltage

1-L/R = 100ms
 2-L/R = 40ms

Melting Time-Current Data



Current in Amperes

Above: Curves indicate, for each rated current, pre-arcing (melting) time vs. R.M.S. pre-arcing (melting) current.

Current rating (A)	630	550	Maximum operating current (A)
	700	600	
	750	600	
	800	650	

± 7% tolerance for mean pre-arcing (melting) current

G