

# CP

## CABLE PROTECTORS / SPECIAL PURPOSE



### Features/Benefits

- **Fiberglass bodies** for dimensional stability in harsh environments
- **Catalog number stamped** into terminal for permanent identification
- **Crimp terminals** for aluminum cable include oxide inhibitor
- **Molded rubber boots** or heat shrinkable tubing available for insulation and protection
- **Current limiting device**
- **Permitted by code**

### Ratings

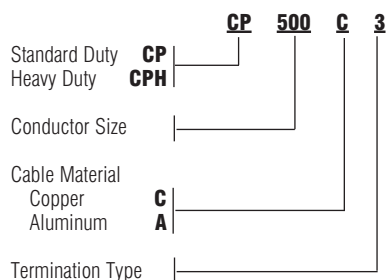
- Sizes #2 to 1000kcmil copper
- 4/0 to 1000kcmil aluminum  
600VAC,  
200kA I.R.

### Approvals

- Ferraz Shawmut Certified
- UL Listed to File E305297



### Catalog Numbering System



\*Please consult factory for special terminations.

### CABLE PROTECTORS

Ferraz Shawmut CP Cable Protectors are special purpose limiters which are crimped or bolted to cables or terminals to clear and isolate faults quickly, increasing the reliability of service entrance and distribution runs. They are current limiting with a 200,000A interrupting rating, yet will carry low cable overloads which are handled by standard protective devices. Cable Protectors are rated in terms of cable size and material (Al or Cu). Heavier duty CPH Cable Protectors are available on special order. Heat shrinkable (HS) tubing can be specified for field installation. Refer to the Application Information Section for more information.

Description		Catalog # for Cable Type		
Type	Termination	Cable Size	Copper	Aluminum
1	Cable to Cable	2	CP2C1	-
		1/0	CP1/0C1	-
		2/0	CP2/0C1	-
		4/0	CP4/0C1	CP4/0A1
		250kcmil	CP250C1	CP250A1
		350kcmil	CP350C1	CP350A1
		400kcmil	CP400C1	CP400A1
		500kcmil	CP500C1	CP500A1
		600kcmil	CP600C1	CP600A1
3	Cable to Offset Bus	2	CP2C3	-
		1/0	CP1/0C3	-
		2/0	CP2/0C3	-
		4/0	CP4/0C3	CP4/0A3
		250kcmil	CP250C3	CP250A3
		350kcmil	CP350C3	CP350A3
		400kcmil	CP400C3	-
		500kcmil	CP500C3	CP500A3
		600kcmil	CP600C3	CP600A3
5	Straight Bus to Offset Bus	4/0	CP4/0C5	CP4/0C5
		250kcmil	CP250C5	CP250C5
		350kcmil	CP350C5	CP350C5
		500kcmil	CP500C5	CP500C5
		600kcmil	CP600C5	CP600C5
6	Mole to Cable	4/0	CP4/0C6	CP4/0A6
		250kcmil	CP250C6	CP250A6
		350kcmil	CP350C6	CP350A6
		500kcmil	CP500C6	CP500A6
		750kcmil	CP750C6	CP750A6
8	Mole to Offset Bus	4/0	CP4/0C8	CP4/0C8
		250kcmil	CP250C8	CP250C8
		350kcmil	CP350C8	CP350C8
		500kcmil	CP500C8	CP500C8
		750kcmil	CP750C8	CP750C8

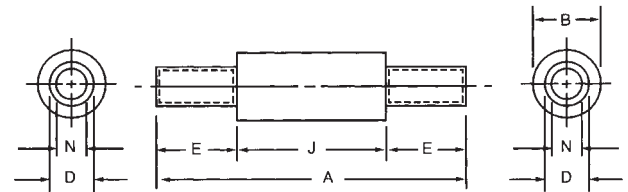


# CP

## COPPER CABLE PROTECTORS/SPECIAL PURPOSE

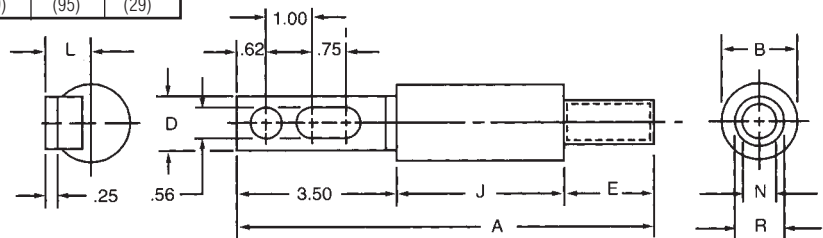
### Type C1 – Dimensions

CATALOG NUMBER	CABLE* SIZE	DIMENSIONS - INCHES (mm)					
		A	B	D	E	J	N
CP2C1	#2	7.12 (180)	1.44 (37)	.42 (11)	1.75 (44)	3.62 (92)	.31 (7.9)
CP1/OC1	1/0	7.12 (180)	1.44 (37)	.52 (13)	1.75 (44)	3.62 (92)	.39 (9.9)
CP2/OC1	2/0	7.12 (180)	1.44 (37)	.56 (14)	1.75 (44)	3.62 (92)	.44 (11)
CP4/OC1	4/0	7.12 (180)	1.44 (37)	.68 (17)	1.75 (44)	3.62 (92)	.55 (14)
CP250C1	250kcmil	7.38 (188)	1.44 (37)	.75 (19)	1.88 (48)	3.62 (92)	.62 (16)
CP350C1	350kcmil	7.62 (194)	1.62 (41)	.88 (22)	2.00 (51)	3.62 (92)	.71 (18)
CP400C1	400kcmil	7.62 (194)	1.62 (41)	.94 (24)	2.00 (51)	3.62 (92)	.75 (19)
CP500C1	500kcmil	9.38 (238)	1.88 (48)	1.05 (27)	2.88 (73)	3.62 (92)	.85 (22)
CP600C1	600kcmil	9.51 (242)	2.50 (64)	1.07 (27)	2.88 (73)	3.75 (95)	.94 (24)
CP750C1	750kcmil	9.51 (242)	2.50 (64)	1.32 (34)	2.88 (73)	3.75 (95)	1.06 (27)
CP1000C1	1000kcmil	10.00 (254)	3.00 (76)	1.50 (38)	3.13 (79)	3.75 (95)	1.16 (29)



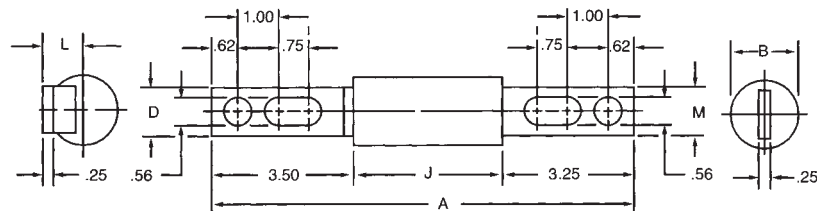
### Type C3 – Dimensions

CATALOG NUMBER	CABLE* SIZE	DIMENSIONS - INCHES (mm)									
		A	B	D	E	I	J	L	N	R	
CP2C3	#2	8.87 (225)	1.44 (37)	1.12 (28)	1.75 (44)	3.50 (88.9)	3.62 (92)	.96 (24)	.31 (7.9)	.42 (11)	
CP1/OC3	1/0	8.87 (225)	1.44 (37)	1.12 (28)	1.75 (44)	3.50 (88.9)	3.62 (92)	.96 (24)	.39 (9.9)	.52 (13)	
CP2/OC3	2/0	8.87 (225)	1.44 (37)	1.12 (28)	1.75 (44)	3.50 (88.9)	3.62 (92)	.96 (24)	.44 (11)	.56 (14)	
CP4/OC3	4/0	8.87 (225)	1.44 (37)	1.12 (28)	1.75 (44)	3.50 (88.9)	3.62 (92)	.96 (24)	.55 (14)	.68 (17)	
CP250C3	250kcmil	9.00 (229)	1.44 (37)	1.12 (28)	1.88 (48)	3.50 (88.9)	3.62 (92)	.96 (24)	.62 (16)	.75 (19)	
CP350C3	350kcmil	9.12 (232)	1.62 (41)	1.12 (28)	2.00 (51)	3.50 (88.9)	3.62 (92)	.96 (24)	.71 (18)	.88 (22)	
CP400C3	400kcmil	9.12 (232)	1.62 (41)	1.12 (28)	2.00 (51)	3.50 (88.9)	3.62 (92)	.96 (24)	.75 (19)	.88 (22)	
CP500C3	500kcmil	10.00 (254)	1.88 (48)	1.62 (41)	2.88 (73)	3.50 (88.9)	3.62 (92)	1.19 (30)	.85 (22)	1.05 (27)	
CP600C3	600kcmil	10.13 (257)	2.50 (64)	2.00 (51)	2.88 (73)	3.50 (88.9)	3.75 (95)	1.31 (33)	.94 (24)	1.07 (27)	
CP750C3	750kcmil	10.13 (257)	2.50 (64)	2.00 (51)	2.88 (73)	3.50 (88.9)	3.75 (95)	1.31 (33)	1.06 (27)	1.32 (34)	
CP1000C3	1000kcmil	10.63 (270)	3.00 (76)	2.00 (51)	3.13 (79)	3.75 (95)	3.75 (95)	1.56 (40)	1.16 (29)	1.50 (38)	

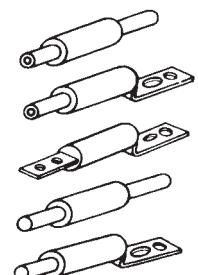


### Type C5 – Dimensions

CATALOG NUMBER	CABLE* SIZE	DIMENSIONS - INCHES (mm)					
		A	B	D	J	L	M
CP4/OC5	4/0	10.37 (263)	1.44 (37)	1.12 (28)	3.62 (92)	.96 (24)	1.12 (28)
CP250C5	250kcmil	10.37 (263)	1.44 (37)	1.12 (28)	3.62 (92)	.96 (24)	1.12 (28)
CP350C5	350kcmil	10.37 (263)	1.62 (41)	1.12 (28)	3.62 (92)	.96 (24)	1.12 (28)
CP400C5	400kcmil	10.37 (263)	1.62 (41)	1.12 (28)	3.62 (92)	.96 (24)	1.12 (28)
CP500C5	500kcmil	10.37 (263)	1.88 (48)	1.62 (41)	3.62 (92)	1.19 (30)	1.50 (38)
CP600C5	600kcmil	10.50 (267)	2.50 (64)	2.00 (51)	3.75 (95)	1.31 (33)	2.00 (51)
CP750C5	750kcmil	10.50 (267)	2.50 (64)	2.00 (51)	3.75 (95)	1.31 (33)	2.00 (51)



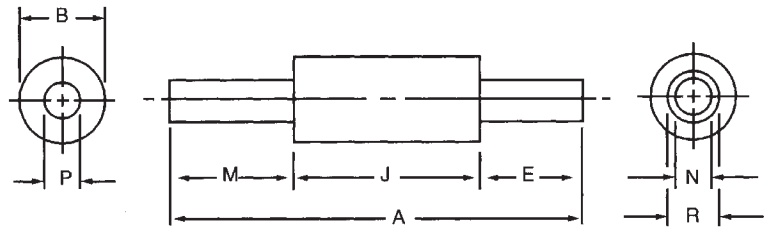
- TYPE 1** — Cable to cable
- TYPE 3** — Cable to offset bus
- TYPE 5** — Bus to offset bus
- TYPE 6** — Mole to cable
- TYPE 8** — Mole to offset bus



\* kcmil = MCM

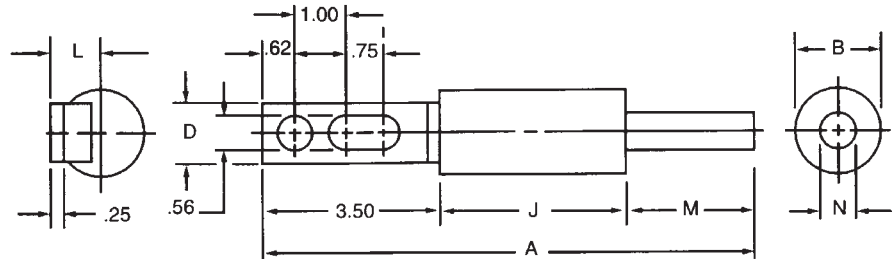
# CP

## COPPER CABLE PROTECTORS / SPECIAL PURPOSE



### Type C6 – Dimensions

CATALOG NUMBER	CABLE* SIZE	DIMENSIONS - INCHES (mm)							
		A	B	E	J	M	N	P	R
CP4/OC6	4/0	7.87 (200)	1.44 (37)	1.75 (44)	3.62 (92)	2.50 (64)	.55 (14)	.52 (13)	.68 (17)
CP250C6	250kcmil	8.00 (203)	1.44 (37)	1.88 (48)	3.62 (92)	2.50 (64)	.62 (16)	.58 (14)	.75 (19)
CP350C6	350kcmil	8.12 (206)	1.62 (41)	2.00 (51)	3.62 (92)	2.50 (64)	.71 (18)	.68 (17)	.88 (22)
CP500C6	500kcmil	9.38 (238)	1.88 (48)	2.88 (73)	3.62 (92)	2.88 (73)	.85 (22)	.81 (21)	1.05 (27)
CP750C6	750kcmil	9.51 (427)	2.50 (64)	2.88 (73)	3.75 (95)	2.88 (73)	1.06 (27)	1.00 (25)	1.32 (34)



### Type C8 – Dimensions

CATALOG NUMBER	CABLE* SIZE	DIMENSIONS - INCHES (mm)						
		A	B	D	J	L	M	N
CP4/OC8	4/0	9.62 (244)	1.44 (37)	1.12 (28)	3.62 (92)	.96 (24)	2.50 (64)	.52 (13)
CP250C8	250kcmil	9.62 (244)	1.44 (37)	1.12 (28)	3.62 (92)	.96 (24)	2.50 (64)	.58 (14)
CP350C8	350kcmil	9.62 (244)	1.62 (41)	1.12 (28)	3.62 (92)	.96 (24)	2.50 (64)	.68 (17)
CP500C8	500kcmil	10.00 (254)	1.88 (48)	1.62 (41)	3.62 (92)	1.19 (30)	2.88 (73)	.81 (21)
CP750C8	750kcmil	10.13 (257)	2.50 (64)	2.00 (51)	3.75 (95)	1.31 (33)	2.88 (73)	1.00 (25)

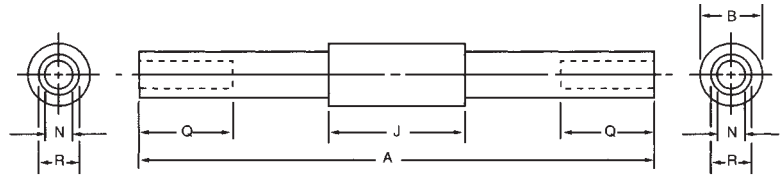
\* kcmil = MCM



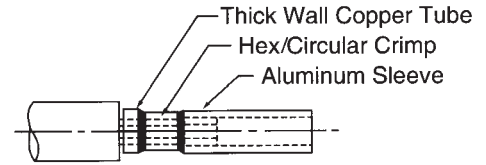
# CP

## ALUMINUM CABLE PROTECTORS/SPECIAL PURPOSE

### Type A1 – Dimensions

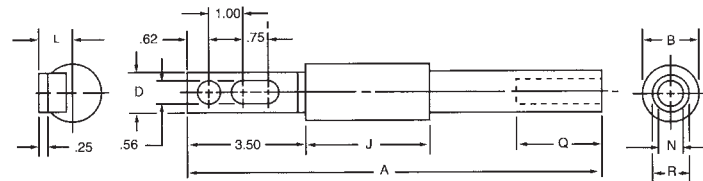


CATALOG NUMBER	CABLE* SIZE	DIMENSIONS - INCHES (mm)					
		A	B	J	N	Q	R
CP4/0A1	4/0	13.88 (353)	1.44 (37)	3.62 (92)	.55 (14)	2.50 (64)	.85 (22)
CP250A1	250kcmil	13.88 (353)	1.44 (37)	3.62 (92)	.59 (15)	2.50 (64)	.94 (24)
CP350A1	350kcmil	13.88 (353)	1.62 (41)	3.62 (92)	.71 (18)	2.50 (64)	1.13 (29)
CP500A1	500kcmil	15.38 (391)	1.88 (48)	3.62 (92)	.85 (22)	2.88 (73)	1.33 (34)
CP750A1	750kcmil	15.50 (394)	2.50 (64)	3.75 (95)	1.06 (27)	2.88 (73)	1.62 (41)



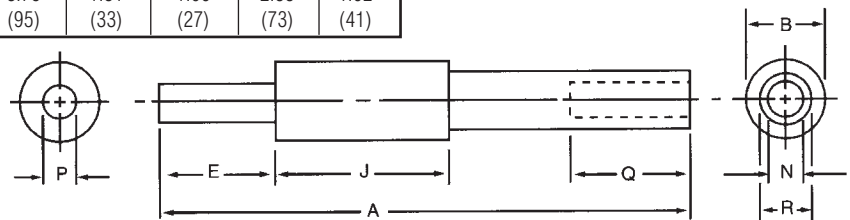
Typical Terminal Assembly Details

### Type A3 – Dimensions



CATALOG NUMBER	CABLE* SIZE	DIMENSIONS - INCHES (mm)							
		A	B	D	J	L	N	Q	R
CP4/0A3	4/0	12.25 (311)	1.44 (37)	1.12 (28)	3.62 (92)	.96 (24)	.55 (14)	2.50 (64)	.85 (22)
CP250A3	250kcmil	12.25 (311)	1.44 (37)	1.12 (28)	3.62 (92)	.96 (24)	.59 (15)	2.50 (64)	.94 (24)
CP350A3	350kcmil	12.25 (311)	1.62 (41)	1.12 (28)	3.62 (92)	.96 (24)	.71 (18)	2.50 (64)	1.13 (29)
CP500A3	500kcmil	13.00 (330)	1.88 (48)	1.62 (41)	3.62 (92)	1.19 (30)	.85 (22)	2.88 (73)	1.33 (34)
CP750A3	750kcmil	13.12 (333)	2.50 (64)	2.00 (51)	3.75 (95)	1.31 (33)	1.06 (27)	2.88 (73)	1.62 (41)

### Type A6 – Dimensions



CATALOG NUMBER	CABLE* SIZE	DIMENSIONS - INCHES (mm)							
		A	B	E	J	N	P	Q	R
CP4/0A6	4/0	11.25 (286)	1.44 (37)	2.50 (64)	3.62 (92)	.55 (14)	.52 (13)	2.50 (64)	.85 (22)
CP250A6	250kcmil	11.25 (286)	1.44 (37)	2.50 (64)	3.62 (92)	.59 (15)	.58 (14)	2.50 (64)	.94 (24)
CP350A6	350kcmil	11.25 (286)	1.62 (41)	2.50 (64)	3.62 (92)	.71 (18)	.68 (17)	2.50 (64)	1.13 (29)
CP500A6	500kcmil	12.38 (314)	1.88 (48)	2.88 (73)	3.62 (92)	.85 (22)	.81 (21)	2.88 (73)	1.33 (34)
CP750A6	750kcmil	12.50 (318)	2.50 (64)	2.88 (73)	3.75 (95)	1.06 (27)	1.00 (25)	2.88 (73)	1.59 (41)

**Type 5 – Use Copper Cable Protectors Type C5**

**Type 8 – Use Copper Cable Protectors Type C8**

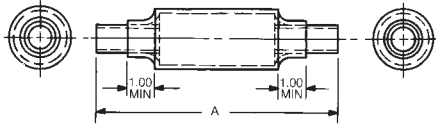
\* kcmil = MCM

**Note:** Inside surface of sleeve ends is coated with oxide inhibitor and capped.

# CP

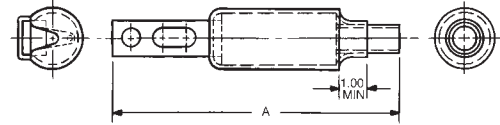
## CABLE PROTECTORS / SPECIAL PURPOSE

### Copper Cable Protectors with Heat Shrinkable Tubing\*



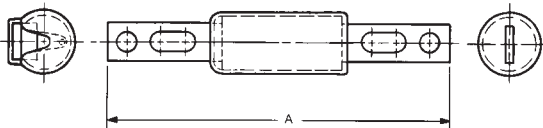
**Type C1, Copper Cable – Dimensions**

CABLE SIZE	A		CATALOG NO. CABLE PROTECTOR WITH HEAT SHRINKABLE TUBING
	INCHES	(mm)	
4/0	7.12	(180)	CP4/0C1-HS
250kcmil	7.38	(188)	CP250C1-HS
350kcmil	7.62	(194)	CP350C1-HS
500kcmil	9.38	(238)	CP500C1-HS
750kcmil	9.51	(242)	CP750C1-HS



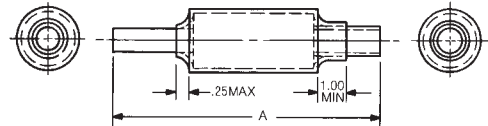
**Type C3, Copper Cable – Dimensions**

CABLE SIZE	A		CATALOG NO. CABLE PROTECTOR WITH HEAT SHRINKABLE TUBING
	INCHES	(mm)	
4/0	8.87	(225)	CP4/0C3-HS
250kcmil	9.00	(229)	CP250C3-HS
350kcmil	9.12	(232)	CP350C3-HS
500kcmil	10.00	(254)	CP500C3-HS
750kcmil	10.13	(257)	CP750C3-HS



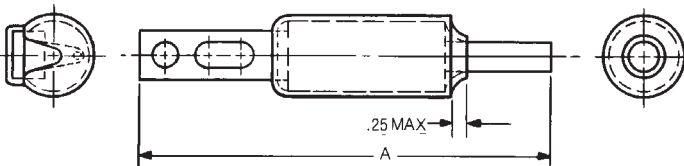
**Type C5, Copper Cable – Dimensions**

CABLE SIZE	A		CATALOG NO. CABLE PROTECTOR WITH HEAT SHRINKABLE TUBING
	INCHES	(mm)	
4/0	10.37	(263)	CP4/0C5-HS
250kcmil	10.37	(263)	CP250C5-HS
350kcmil	10.37	(263)	CP350C5-HS
500kcmil	10.37	(263)	CP500C5-HS
750kcmil	10.50	(267)	CP750C5-HS



**Type C6, Copper Cable – Dimensions**

CABLE SIZE	A		CATALOG NO. CABLE PROTECTOR WITH HEAT SHRINKABLE TUBING
	INCHES	(mm)	
4/0	7.87	(200)	CP4/0C6-HS
250kcmil	8.00	(203)	CP250C6-HS
350kcmil	8.12	(206)	CP350C6-HS
500kcmil	9.38	(238)	CP500C6-HS
750kcmil	9.51	(242)	CP750C6-HS



**Type C8, Copper Cable – Dimensions**

CABLE SIZE	A		CATALOG NO. CABLE PROTECTOR WITH HEAT SHRINKABLE TUBING
	INCHES	(mm)	
4/0	9.62	(244)	CP4/0C8-HS
250kcmil	9.62	(244)	CP250C8-HS
350kcmil	9.62	(244)	CP350C8-HS
500kcmil	10.00	(254)	CP500C8-HS
750kcmil	10.13	(257)	CP750C8-HS

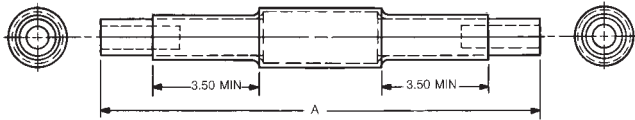
\* Transparent heat shrinkable tubing is supplied separately with **-HS** Catalog No. Maximum curing conditions: 5 seconds at 450 °F.



# CP

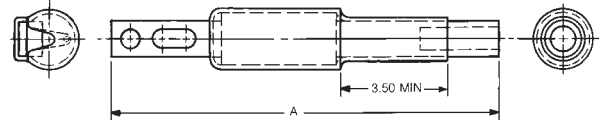
## CABLE PROTECTORS / SPECIAL PURPOSE

### Aluminum Cable Protectors with Heat Shrinkable Tubing\*



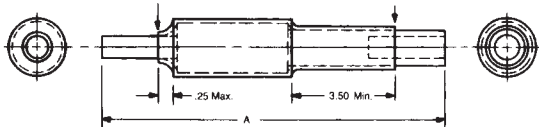
**Type A1, Copper Cable – Dimensions**

CABLE SIZE	A		CATALOG NO. CABLE PROTECTOR WITH HEAT SHRINKABLE TUBING
	INCHES	(mm)	
4/0	13.88	(353)	CP4/0A1-HS
250kcmil	13.88	(353)	CP250A1-HS
350kcmil	13.88	(353)	CP350A1-HS
500kcmil	15.38	(391)	CP500A1-HS
750kcmil	15.50	(394)	CP750A1-HS



**Type A3, Copper Cable – Dimensions**

CABLE SIZE	A		CATALOG NO. CABLE PROTECTOR WITH HEAT SHRINKABLE TUBING
	INCHES	(mm)	
4/0	12.25	(311)	CP4/0A3-HS
250kcmil	12.25	(311)	CP250A3-HS
350kcmil	12.25	(311)	CP350A3-HS
500kcmil	13.00	(330)	CP500A3-HS
750kcmil	13.12	(333)	CP750A3-HS



**Type A6, Copper Cable – Dimensions**

CABLE SIZE	A		CATALOG NO. CABLE PROTECTOR WITH HEAT SHRINKABLE TUBING
	INCHES	(mm)	
4/0	11.25	(286)	CP4/0A6-HS
250kcmil	11.25	(286)	CP250A6-HS
350kcmil	11.25	(286)	CP350A6-HS
500kcmil	12.38	(314)	CP500A6-HS
750kcmil	12.50	(318)	CP750A6-HS

\* Transparent heat shrinkable tubing is supplied separately with **-HS** Catalog Numbers. Maximum curing conditions: 5 seconds at 450 °F.

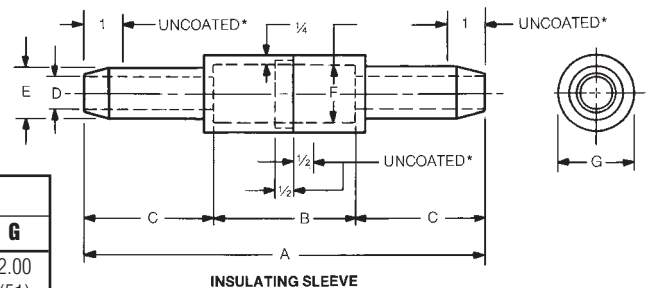
**Type 5 – Use Copper Cable Protectors Type C5**

**Type 8 – Use Copper Cable Protectors Type C8**

### Molded Rubber Insulating Sleeves\*\*

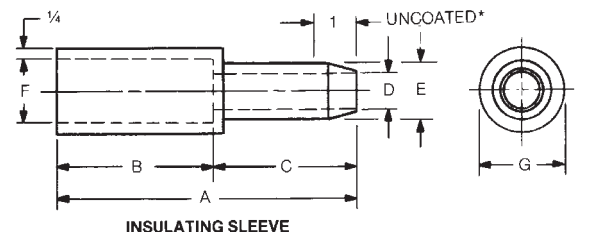
#### For Type C1 Copper Cable Protectors – Dimensions

CATALOG NUMBER	CABLE SIZE	DIMENSIONS - INCHES (mm)						
		A	B	C	D	E	F	G
4/0CCR	4/0	10.44	3.69	3.38	.83	1.33	1.50	2.00
		(265)	(94)	(86)	(21)	(33)	(38)	(51)
500CCR	500kcmil	14.19	3.69	5.25	1.31	1.81	1.94	2.44
		(360)	(94)	(133)	(33)	(46)	(49)	(62)



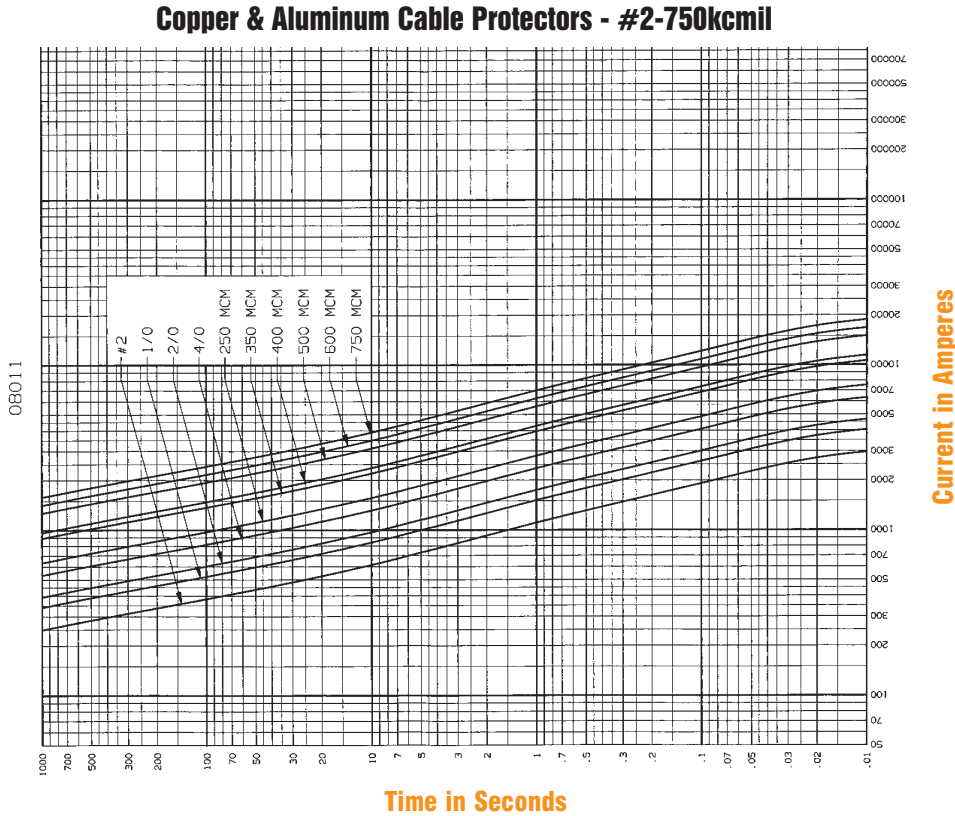
#### For Type C3 Copper Cable Protectors – Dimensions

CATALOG NUMBER	CABLE SIZE	DIMENSIONS - INCHES (mm)						
		A	B	C	D	E	F	G
4/0CBR	4/0	7.06	3.69	3.38	.83	1.33	1.50	2.00
		(179)	(94)	(86)	(21)	(33)	(38)	(51)
500CBR	500kcmil	8.94	3.69	5.25	1.31	1.81	1.94	2.44
		(227)	(94)	(133)	(33)	(46)	(49)	(62)

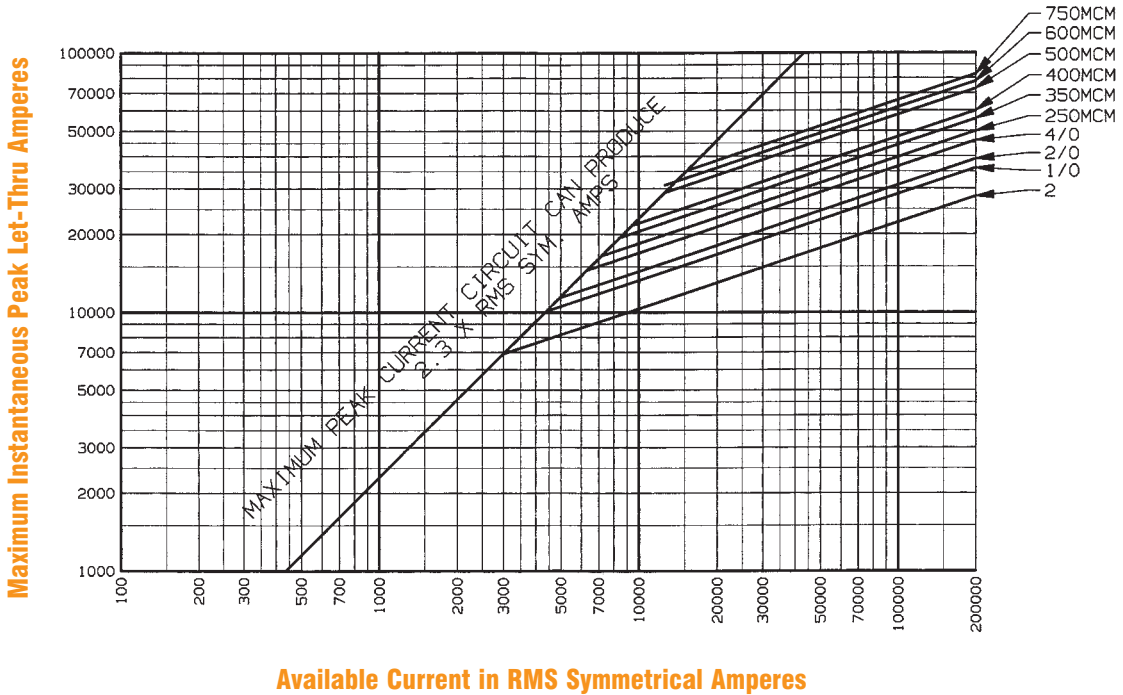


\*\* Molded rubber insulating sleeves are ordered by their own catalog numbers, and not as suffixes to the cable protector catalog numbers. Neoprene coated except as noted.

Melting Time - Current Data, 600V Fuses



**Peak Let-Through Current Data  
Copper & Aluminum Cable Protectors - #2-750kcmil - 600V**



# CP

## CABLE PROTECTORS/SPECIAL PURPOSE

Ferraz Shawmut cable protectors have standard commercial splicing sleeve dimensions. Any crimping tool suitable for standard splicing sleeves, can be used. Follow crimping tool manufacturers instructions. Some crimping tool examples are shown below.

### Circular Crimp – Copper Cable

Cable** Size	Burdny Hypress & Die Set				
	Y34A	Y35	Y39	Y46*	Y48B
4/0	A28R	U28RT	U28RT	U28RT	C28R
250kcmil	A29R	U29RT	U29RT	U29RT	C29R
350kcmil	A31R	U31RT	U31RT	U31RT	C31R
500kcmil	A34R	U34RT	U34RT	U34RT	C34R
750kcmil	-	-	U39RT	U39RT	C39R

### Hex/Circular Crimp – Copper Cable

Cable** Size	T & B Installing Tools				
	TBMB Tool	13642 Head		TBM 15 Head	
	Die Cat. No.	Die Cat. No. Code No.		Die Cat. No. Code No.	
4/0	13463	11740	54	15511	54H
250kcmil	13463	11771	62	15510	62
350kcmil	13466	11743	71H	15514	71H
500kcmil	13468	11746	87H	15506	87H
750kcmil	-	11749	106H	15515	106H

### Circular Crimp – Aluminum Cable

4/0	-	U28ART	U28ART	U28ART	C28AR
250kcmil	-	U29ART	U29ART	U29ART	C29AR
350kcmil	-	U31ART	U31ART	U31ART	C31AR
500kcmil	-	U34ART	U34ART	U34ART	C34AR
750kcmil	-	-	U39ART	U39ART	C39AR

### Hex/Circular Crimp – Aluminum Cable

4/0	13465	11742	66H	15534	66
250kcmil	13466	11743	71H	15514	71H
350kcmil	13468	11746	87H	15506	87H
500kcmil	-	11749	106H	15515	106H
750kcmil	-	-	-	15603	125H

### Hex/Circular Crimp – Copper Cable

Cable** Size	Homac Tools	
	UT 15 Head	
	Die	
	Cat. No.	Code No.
4/0	15511	54H
250kcmil	15510	62
350kcmil	15514	71H
500kcmil	15587	87H
750 kcmil	15500	106H

### Ferraz Shawmut Cable Protector Splicing Sleeve Dimensions

Cable* Size	I.D.	O.D.	Sleeve Length
#2	.31 (7.9)	.42 (11)	1.75 (44)
1/0	.39 (9.9)	.52 (13)	1.75 (44)
2/0	.44 (11)	.56 (14)	1.75 (44)
4/0	.55 (14)	.68 (17)	1.75 (44)
250kcmil	.62 (16)	.75 (19)	1.89 (48)
350kcmil	.71 (18)	.88 (22)	2.00 (51)
400kcmil	.75 (19)	.94 (.24)	2.00 (51)
500kcmil	.85 (22)	1.05 (27)	2.88 (73)
600kcmil	.94 (24)	1.07 (27)	2.88 (73)
750kcmil	1.06 (27)	1.32 (34)	2.88 (73)

### Hex/Circular Crimp – Aluminum Cable

4/0	15534	66
250kcmil	15514	71H
350kcmil	15506	87H
500kcmil	15515	106H
750 kcmil	15603	125H

\* with adapter P-U-ADP

\*\* kcmil = MCM