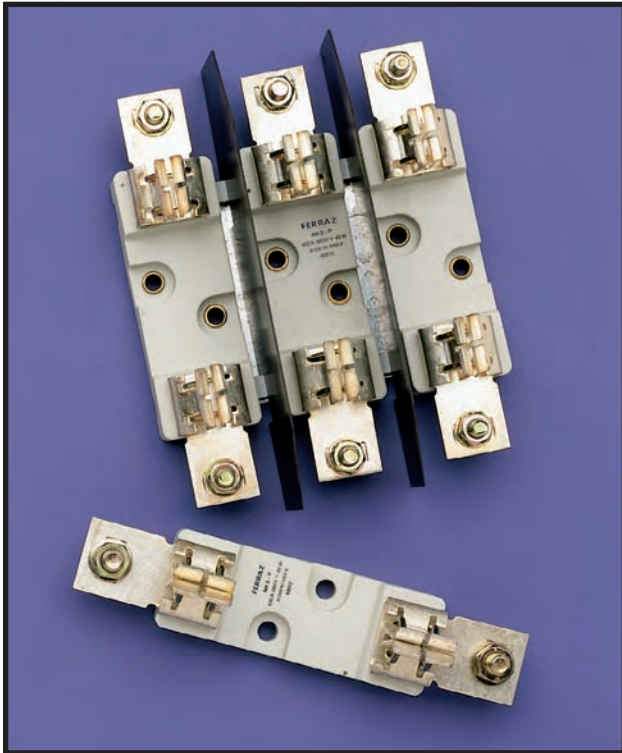


# NH DIMENSION

## FUSE BASES



### 690V CERAMIC FUSE BASES FOR NH FUSE-LINKS

- Ceramic insulating bases
- Silver plated contacts
- High spring contact pressure
- Screw mounting



40002-G

40006-G

### Single-Pole Fuse Bases

| SIZE  | RATED CURRENT (A) | CATALOG NUMBER |
|-------|-------------------|----------------|
| 00-E  | 160               | 40002-G        |
| 00-EB | 160               | 40003-G        |
| 0-E   | 160               | 40004-G        |
| 0-P   | 160               | 40006-G        |
| 1-P   | 250               | 40008-G        |
| 2-P   | 400               | 40010-G        |
| 3-P   | 630               | 40012-G        |
| 4-P   | 1250              | 40014-G        |

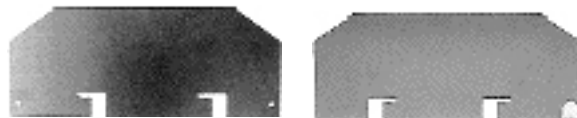


40510-G

### Three-Pole Fuse Bases

| SIZE  | RATED CURRENT (A) | CATALOG NUMBER |
|-------|-------------------|----------------|
| 00-E  | 160               | 40502-G        |
| 00-EB | 160               | 40503-G        |
| 0-E   | 160               | 40504-G        |
| 1-P   | 250               | 40508-G        |
| 2-P   | 400               | 40510-G        |
| 3-P   | 630               | 40512-G        |

**Notes:** Size 1 fuse base will accept size 0 fuses.  
 Size 2 fuse base will accept size 1 fuses.  
 Size 3 fuse base will accept size 1 & 2 fuses.  
 Size 4 has a special nut to assure contact pressure.  
 Types E and EP have square contacts  
 Types P and PP have pincer contacts  
 Type EB has pressure-plate cable connection.



FRICITION FIT  
45110-G

TAB FASTENED  
45212-G

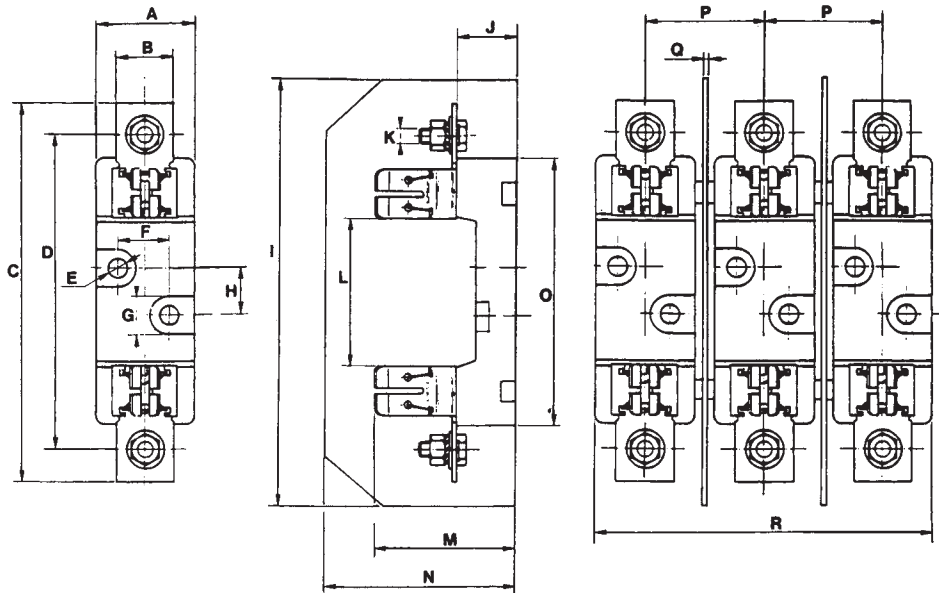
### Insulating Barriers for Ceramic NH Fuse Bases

| SIZE | RATED CURRENT (A) | CATALOG NUMBER |
|------|-------------------|----------------|
| 00   | 100               | 45102-G        |
| 0    | 160               | 45104-G        |
| 1-2  | 400               | 45110-G        |
| 3    | 630               | 45112-G        |

|     |      |         |
|-----|------|---------|
| 00  | 100  | 45202-G |
| 0   | 160  | 45204-G |
| 1-2 | 400  | 45210-G |
| 3   | 630  | 45212-G |
| 4   | 1250 | 45214-G |



# NH DIMENSION



### Dimensions of Ceramic Fuse Bases for NH Fuse-Links

|    | 00-E, EB | 0-E | 0-P | 1-P | 2-P | 3-P | 4-P |
|----|----------|-----|-----|-----|-----|-----|-----|
| A  | 33       | 32  | 32  | 55  | 55  | 55  | 80  |
| B  | 20       | 20  | 25  | 32  | 35  | 40  | 45  |
| C  | 118.5    | 269 | 166 | 210 | 227 | 241 | 312 |
| D  | 100      | 151 | 150 | 175 | 200 | 210 | 262 |
| E* | 8        | 8.5 | 8.5 | 11  | 11  | 11  | 11  |
| F  | -        | -   | -   | 30  | 30  | 30  | 45  |
| G  | 14.5     | 14  | 14  | 22  | 22  | 22  | -   |
| H  | 25       | 25  | 25  | 25  | 25  | 25  | 30  |
| I  | 145      | 185 | 185 | 250 | 250 | 250 | -   |
| J  | 21.5     | 29  | 29  | 35  | 35  | 35  | 45  |
| K  | 8        | 8   | 8   | 10  | 10  | 12  | 16  |
| L  | 55       | 72  | 74  | 84  | 84  | 84  | 111 |
| M  | 52.5     | 60  | 60  | 71  | 89  | 103 | 145 |
| N  | 80       | 85  | 85  | 100 | 100 | 127 | -   |
| O  | 84       | 120 | 120 | 148 | 148 | 148 | 192 |
| P  | 34       | 47  | 47  | 62  | 69  | 82  | -   |
| Q  | 1        | 2   | 2   | 2   | 2   | 2   | -   |
| R  | 101      | 126 | 126 | 177 | 190 | 213 | -   |

\* 8mm for all multiple pole bases; dimensions in chart for single pole bases.