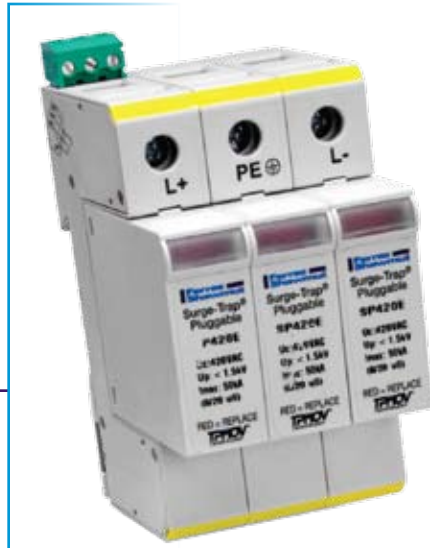


Surge-Trap® Pluggable SPD for Photovoltaic - Data Sheet

Fail-Safe

Cost Effective

TPMOV® Technology



No Fuse Required

Application

For **Photovoltaic Type 2 Applications**
STP600YPVM, STP1000YPVM, STP1200YPVM

The Surge-Trap Pluggable provides advanced overvoltage protection to photovoltaic systems by utilizing Ferraz Shawmut's patented TMOV design. The Surge-Trap Pluggable base is designed to be mounted on 35mm DIN-rail while plugs are easily replaceable upon failure without touching the base or the hassle of rewiring. It also features visual indicator, easy installation, **fail-safe design**, mechanical coding and remote monitoring.

TMOV
 TECHNOLOGY
 By Ferraz Shawmut

System Information

Surge-Trap Pluggable System - <i>Includes Base & Plugs</i>	STP600YPVM	STP1000YPVM	STP1200YPVM
Nominal Voltage (Vac)	600DC	1000DC	1200DC
MCOV ($U_{c,pv}$) L-PE	720 VDC	1200 VDC	1440 VDC
Nominal Discharge Current (I_n , kA)	20	10	10
Max. Discharge Current (I_{max} , 8/20, kA)	50	50	50
Voltage Protection Level (U_p @ I_n , kA)	< 2.0	< 4.0	< 4.0
Replacement Plug Part No	SP350PV	SP560PV	SP670PV
Operating Temperature	-40°C to 80°C		
ISCWPV (kA)	10		
L/R	≤1mS		
Application	Type 2		
Standard	IEC 61643-11		

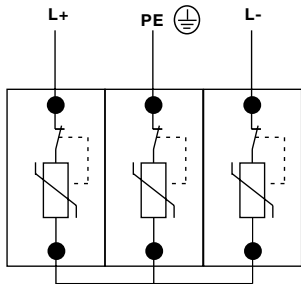
More on Reverse 

Surge-Trap[®] Pluggable SPD for Photovoltaic - Data Sheet

For **Photovoltaic Type 2** Applications

STP600YPVM, STP1000YPVM, STP1200YPVM

Wiring Diagram

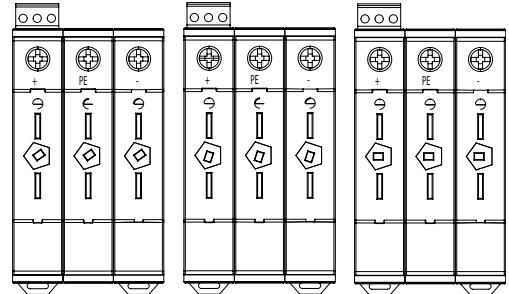


Wire Installation

#6 – #14 AWG, 60/75°C
Copper wire shall be used.
Maximum torque to be applied to terminal screws is 2.0 newton-meter (14.75 in-lb). Strip back wire insulation 6mm (1/4”).

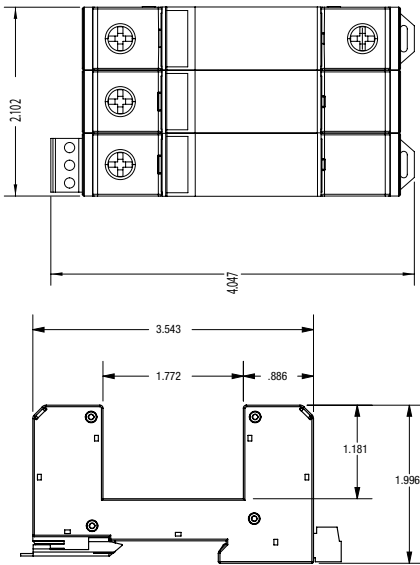
STP600YPVM / STP1000YPVM / STP1200YPVM

Base & Voltage Key Orientation

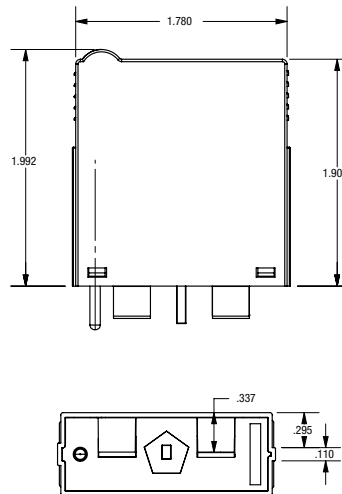


STP600YPVM / STP1000YPVM / STP1200YPVM

Base Measurements



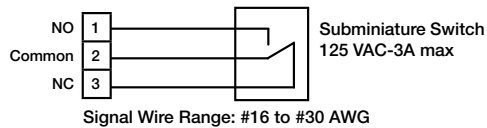
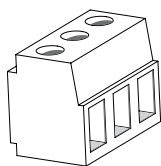
Plug Measurements



For more information, visit us at:

Ferraz Shawmut | Global
15 rue Jacques de Vaucanson
F-69720 Saint-Bonnet-de-Mure
Tel. #33 (0)4 72 22 66 11
Fax +33 (0)4 72 22 67 13
www.ferrazshawmut.com

Microswitch Details



Auxiliary Micro-Switch Installation

Remote signaling is available on all Surge-Trap products that specify a remote indicator. #16 – #30 AWG signal wire may be used. The maximum continuous current rating for the remote indicator is 3A.

- Terminal Torque 2.2 lb-in
- Cont. between Comm + NO = Product Offline, Not Protected
- Cont. between Comm + NC = Product Online, Protected

Ferraz Shawmut | North America
374 Merrimac Street
Newburyport, MA 01950
Tel. 978-462-6662
Fax 978-462-0181
www.us.ferrazshawmut.com

© 2009 Ferraz Shawmut. All rights reserved.



DS-STP-PV | 200 | 10.09 | KingGraphics

